

# Evidence-Based Clinical Assessment Toolkit (EBCAT)

## Cognition Workbook



[www.aacs.com.au](http://www.aacs.com.au)



## COPYRIGHT

© 2016 Applied Aged Care Solutions Pty Ltd ABN 46 083 264 359

All rights reserved. Applied Aged Care Solutions Pty Ltd (**AACS**):

- ❖ invests significant time and resources in creating its original products;
- ❖ protects its copyright material;
- ❖ will enforce its rights in copyright material;
- ❖ reserves its legal rights to claim its loss and damage or an account of profits made resulting from infringements of its copyright.

Except as otherwise set out, AACS owns all copyright in this pack (“product”). AACS grants **Barwon Health** and the **Department of Health Victoria** a non-exclusive, perpetual, irrevocable, non-transferable, worldwide and royalty free licence to use the materials. Except as permitted by the Copyright Act 1968 (Cth) or unless you have obtained the specific written permission of AACS, Barwon Health, or the Department of Health Victoria, **you must not**, whether by electronic, mechanical or graphical means, or by hand or by any other means:

- reproduce or copy this product in whole or in part;
- modify or adapt this product;
- use this product for training purpose without licence;
- publish this product in whole or in part;
- cause this product in whole or in part to be transmitted;
- store this product in whole or in part in a retrieval system including a computer;
- record this product in whole or in part either electronically or mechanically; or
- resell this product in whole or in part.

## DISCLAIMER

Applied Aged Care Solutions Pty Ltd (**AACS**) and its authors are not responsible for the results of any action taken on the basis of any information in this publication or for any error in or omission from this publication. This publication contains information of a general nature that may not be suitable to your own circumstances. It is your responsibility to satisfy yourself as to its suitability for your circumstances.

The publication has been compiled from information provided by third parties and other sources. There may be technical inaccuracies, typographical errors or unsuitable material for you. If you have any concerns about such third party content, you should refer to those sources for more specialist information and advice. Attribution to such sources appears in the text of this publication.

To the fullest extent permitted by law, AACS and its authors will be under no liability to any person in respect of any loss or damage (including consequential loss or damage) which may be suffered or incurred or which may arise directly or indirectly from or in connection with any use of this publication or the information contained in it.

To the fullest extent permitted by law, all express or implied warranties are hereby excluded. Warranties or guarantees implied by statute which cannot be excluded will apply, however the liability of AACS and its authors for a breach of such implied terms will be limited, at the option of AACS, to any one or more of the following:

- replacement of the product supplied or supply of an equivalent product;
- payment of the cost of replacing the product or of acquiring an equivalent product;
- payment of the cost of having the product rectified;
- and in no circumstances extends to consequential, indirect or special loss or damage.

# Acknowledgements

Barwon Health, funded through the Department of Health Victoria, engaged Applied Aged Care Solutions (AACS) to develop an evidence based clinical assessment Toolkit (EBCAT) for public sector residential aged care services (PSRACS). Applied Aged Care Solutions (AACS), are ACFI experts, they were the original developers of the ACFI system and have extensive experience in designing assessment models and evidence-based tools for the aged care sector.

Academics from La Trobe and Monash University and other experts have contributed to this unique training resource.

## **La Trobe University**

Dr Deirdre Fetherstonhaugh (Director, Senior Research Fellow), Dr Michael Bauer (Senior Research Fellow ) and Dr. Margaret Winbolt (Senior Research Fellow, Director Victoria and Tasmania Dementia Training Study Centre ) from the Australian Centre for Evidence Based Aged Care (ACEBAC), Australian Institute for Primary Care and Ageing (AIPCA), La Trobe University provided feedback on the EBCAT framework and the process content of the EBCAT workbooks (ADL, Continence, Medicines and Complex Health Workbooks).

## **Monash University**

Professor Daniel O'Connor (Professor of Old Age Psychiatry, Faculty of Medicine, Nursing & Health Sciences, and Head of the Aged Mental Health Research Unit Monash University) provided feedback on the framework and the process content of the EBCAT Cognitive and Behavioural Expressions Workbooks.

## **PRACS Leadership Group**

AACS acknowledges the comments of the PSRACS Nurse Leadership Group and feedback and comment provided at the workshops for PSRACS staff hosted by the Department of Health Victoria.

## **Other Contributors**

We would also like to thank Professor Rhonda Nay for her expert assistance in the EBCAT Complex Health Workbook.

# Contents

<b>ACKNOWLEDGEMENTS</b> .....	<b>3</b>
<b>CONTENTS</b> .....	<b>4</b>
<b>LIST OF TABLES</b> .....	<b>5</b>
<b>LIST OF FIGURES</b> .....	<b>5</b>
<b>ACRONYMS AND GLOSSARY</b> .....	<b>6</b>
<b>OVERVIEW OF THE TOOLKIT PRODUCTS</b> .....	<b>8</b>
<b>SUGGESTED ROLES FOR STAFF IMPLEMENTING THE TOOLKIT</b> .....	<b>9</b>
<b>INTRODUCTION TO THE COGNITION WORKBOOK</b> .....	<b>10</b>
<b>TOPIC 5: COGNITION</b> .....	<b>11</b>
<b>THE COGNITION TOPIC</b> .....	<b>12</b>
INVESTIGATING COGNITION .....	12
GETTING STARTED WITH A COGNITION EXAMPLE .....	16
<b>PREPARATION</b> .....	<b>17</b>
RECOMMENDED STAFFING SKILL SET.....	17
BACKGROUND READING.....	18
Some Basics.....	19
How Cognition Interacts with Other Domains.....	22
<b>IDENTIFICATION PROCESS</b> .....	<b>23</b>
GATHERING THE HISTORY .....	23
DOCUMENTATION .....	23
Resident and Family .....	26
INITIAL NURSE ASSESSMENT .....	27
COMPREHENSIVE ASSESSMENT .....	28
CLINICAL RISK MANAGEMENT .....	30
<b>IMPLEMENTATION PROCESS</b> .....	<b>31</b>
REFERRALS .....	32
INTERVENTIONS .....	34
CARE PLANNING .....	40
LINKING THE EVIDENCE .....	40
GOAL SETTING.....	41
ROLE OF DOCUMENTATION .....	42
COMPLETING THE ACFI DOCUMENTATION.....	44

<b>EVALUATION PROCESS .....</b>	<b>47</b>
OUTCOMES.....	48
<b>SUMMARY: STEPS AND INFORMATION FLOW .....</b>	<b>49</b>
<b>COGNITION RESOURCES .....</b>	<b>51</b>
<b>COGNITION REFERENCES.....</b>	<b>52</b>

## List of Tables

Table 1: Staff Activities for the Cognition Process.....	17
Table 2: Comparison of features between Dementia, Delirium and Depression .....	21
Table 3: Referrals for Cognition .....	34
Table 4: ACFI Question 6 Cognitive Skills Assessment Summary .....	44
Table 5: ACFI Question 6 Cognitive Skills Checklist (abbreviated) .....	45
Table 6: ACFI Question 6 Cognitive Skills Checklist (detailed).....	46
Table 7: Cognition Workbook Resources .....	51
Table 8: References for the Cognition Workbook .....	52

## List of Figures

Figure 1: Cognition Process .....	15
Figure 2: Cognition Information Flow .....	50

## Acronyms and Glossary

<b>ABBEY</b>	Abbey Pain Assessment
<b>ACCR</b>	Aged Care Client Record
<b>ACFI</b>	Aged Care Funding Instrument
<b>ADL</b>	Activities of Daily Living
<b>AHP</b>	Allied Health Professional
<b>BAF</b>	Behavioural Assessment Form
<b>BCOPE</b>	Best Care For Older People Everywhere
<b>BPSD</b>	Behavioural and Psychological Symptoms of Dementia
<b>CAM</b>	Confusion Assessment Method
<b>CCF</b>	Care Continuum Framework
<b>CDAMS</b>	Cognitive, Dementia and Memory Service
<b>CHA</b>	Comprehensive Health Assessment (CHA) of the older person in health and aged care. Assessment template 2014.
<b>CHAOP</b>	Comprehensive Health Assessment of the Older Person
<b>CMA</b>	Comprehensive Medical Assessment
<b>CSDD</b>	Cornell Scale for Depression in Dementia
<b>CTRAC</b>	Continence Tools for Residential Aged Care
<b>DBMAS</b>	Dementia Behaviour Management Advisory Service
<b>DOMS</b>	Dementia Outcomes Measurement Suite
<b>EBCAT</b>	Evidence Based Clinical Assessment Toolkit
<b>EBCAT Assessment Packs</b>	Each workbook has an assessment pack which contains the recommended assessments for the Topics.
<b>EBCAT Introductory Guide</b>	This document presents the project methodology, an overview of the products, and details of the Management role.
<b>EBCAT Resource Pack</b>	This document contains <ul style="list-style-type: none"> <li>• CHAOP modules 3,4 &amp; 7</li> <li>• Quality of Life questionnaire</li> <li>• SMART Goals sheet</li> <li>• Standardised Care Processes</li> </ul>
<b>EBCAT Topics</b>	<ol style="list-style-type: none"> <li>1. Nutrition;</li> <li>2. Mobility;</li> <li>3. Self Care (Personal Hygiene, Toileting)</li> <li>4. Continence</li> <li>5. Cognition</li> <li>6. Behavioural Expressions (Wandering, Verbal &amp; Physical, Mood)</li> <li>7. Medicines</li> <li>8. Pain</li> <li>9. Swallowing</li> <li>10. Skin &amp; Wounds</li> </ol>
<b>EBCAT Workbooks</b>	The toolkit is presented in six 'user friendly educational Workbooks' to walk the user through the process of using evidence-based clinical assessment tools for each domain of:

	<ul style="list-style-type: none"> <li>• ADL Workbook (Topics 1-3)</li> <li>• Continence Workbook (Topic 4)</li> <li>• Cognition Workbook (Topic 5)</li> <li>• Behavioural Expressions Workbook (Topic 6)</li> <li>• Medicine Workbook (Topic 7)</li> <li>• Complex Health Workbook (Topic 8-10)</li> </ul>
<b>FRAT</b>	Falls Risk Assessment Tool
<b>GP</b>	General Practitioner
<b>IPA</b>	International Psychogeriatric Association
<b>KICA-Cog</b>	Kimberley Indigenous Cognitive Assessment- Cognitive Assessment
<b>MP</b>	Medical Practitioner
<b>M-BAF</b>	Modified Behaviour Assessment Form
<b>M-VRBPI</b>	Modified Resident Verbal Brief Pain Inventory
<b>NATFRAME</b>	National Framework for Documenting Care in Residential Aged Care Services <a href="http://webarchive.nla.gov.au/gov/20140803082152/http://www.health.gov.au/internet/publications/publishing.nsf/Content/ageing-rescare-natframe.htm~ageing-rescare-natframe01.htm">http://webarchive.nla.gov.au/gov/20140803082152/http://www.health.gov.au/internet/publications/publishing.nsf/Content/ageing-rescare-natframe.htm~ageing-rescare-natframe01.htm</a>
<b>NCD</b>	Neuro-Cognitive Disorder
<b>NPI-NH</b>	Neuro-Psychiatric Inventory for Nursing Homes
<b>NRS</b>	Numeric Pain Rating Scale
<b>PAINAD</b>	Pain Assessment in Advanced Dementia
<b>PAS-CIS</b>	Psychogeriatric Assessment Scales- Cognitive Impairment Scale
<b>PCC</b>	Person Centred Care
<b>PMS</b>	Physical Mobility Scale
<b>PSRACS</b>	Public Sector Residential Aged Care Services
<b>QoC</b>	Quality of Care
<b>QoL</b>	Quality of Life
<b>RACF</b>	Residential Aged Care Facilities
<b>RNDC</b>	Resident Nutrition Data Card
<b>ROM</b>	Range Of Movement
<b>RUDAS</b>	Rowland Universal Dementia Assessment Scale
<b>SCP</b>	Standardised Care Process
<b>SCORE</b>	Strengthening Care Outcomes for Residents with Evidence
	Self Administration of Medicines
<b>Skin Integrity Assessments</b>	Residential Care Services Skin Integrity Assessment Waterlow Pressure Ulcer Risk Scale Braden Risk Assessment Scale Norton Scale For Predicting Risk Of Pressure Ulcer
<b>Visual Analogue Pain Scales</b>	Facial Thermometer
<b>Wound Assessment</b>	Residential Care Services Wound Assessment and Progress Chart

## Overview of the Toolkit Products

The Evidence-Based Clinical Assessment Toolkit (EBCAT) consists of the following products:

Resource	How used
Introductory Guide	The Introductory Guide presents the project methodology; an introduction to the products; and details on the Management role.
Resource Pack	<p>The Resource Pack provides further reference information for the background reading section of each workbook.</p> <p>This pack contains reading material which cannot be sourced from the internet. References for supporting material that can be sourced off the internet are provided in workbook appendices. There is also a sample Quality of Life questionnaire in the Resource Pack.</p>
Workbooks	<p>The EBCAT Reference Workbooks provide the background materials that inform on the training and e-learning content.</p> <p>There are six workbooks which cover the domains of:</p> <ul style="list-style-type: none"> <li>• Activities of Daily Living</li> <li>• Continence</li> <li>• Cognition</li> <li>• Behavioural Expressions</li> <li>• Medicine</li> <li>• Complex Health</li> </ul> <p>Each workbook contains detailed information and case studies on how to complete the recommended assessment tools as part of a nursing-based process. The Appendices provide references for the suggested resources.</p>
Quick Guides	<p>There are six Quick Guides, one for each Domain.</p> <p>The Quick Guide is a quick reference to the EBCAT process and tools. It is recommended it be kept handy for use on the 'floor', whenever required.</p>
Assessment Packs	The Assessment Packs contains the recommended assessment tools. There is one Assessment Pack per domain. The assessment tools are used as part of the process of identifying the needs of the residents.



## Suggested Roles for Staff Implementing the Toolkit

The toolkit requires the participation of three types of staff.

	<b>Who</b> and what they do in regard to the Toolkit
<b>Governance and change management role</b>	<p>This group will ensure that systems and roles are in place to support quality documentation and accurate ACFI claiming.</p> <p>The role possibly includes:</p> <ul style="list-style-type: none"> <li>○ Managing the readiness of the organisation to implement EBCAT changes</li> <li>○ Selecting key personnel</li> <li>○ Managing and monitoring the implementation of the EBCAT toolkit</li> </ul> <p>The role is further described in detail in the Introductory Guide.</p>
<b>Person responsible for leading the care team</b>	<p>This role will lead and provide mentoring of the process on the floor.</p> <p>The role possibly includes:</p> <ul style="list-style-type: none"> <li>○ Collaborating with the Management group t</li> <li>○ Training and supporting the care team</li> </ul> <p>The leadership role is described in detail in the Introductory Guide.</p>
<b>Care Team</b>	<p>This group deliver the care to the resident; it includes nursing staff, Allied Health Professionals, and Health Professionals.</p> <p>They may contribute to the resident assessment and care planning processes, and the documentation activities.</p>

## Introduction to the Cognition Workbook

The Cognition Workbook is one of six that form the Evidence Based Clinical Assessment Toolkit (EBCAT). This workbook is one of four resources relevant to the Cognition Topic which comprise:

- Resource Pack
- Cognition Workbook
- Cognition Quick Guide
- Cognition Assessment Pack

The toolkit aims to provide a resource to assist Public Sector Residential Aged Care Services (PSCRACS) staff to systematically and consistently determine and manage resident care needs. . The toolkit uses evidence-based clinical assessment tools for assessing and managing residents with the goals of improving the clinical and quality of life for the residents and demonstrating accountability to government regulators for example, with the Aged Care Funding Instrument (ACFI) requirements.

During 2013, the Australian Government made changes to the Aged Care Funding Instrument (ACFI) requiring further evidence to support funding claims made by services in some domains (e.g. activities of daily living). In addition, the Australian government introduced more stringent penalties for providers with inaccurate or misleading ACFI appraisals from 1 July 2013.

While the ACFI assessment pack determines the mandatory assessment for the cognitive domain, this workbook looks beyond ACFI requirements and has recommended further assessment options for cognition. The Cognition Workbook will assist a service to meet the ACFI evidence requirements using familiar and freely available Australian toolkits and resources including:

- ACFI User Guide
- An Initial Nurse Assessment, e.g. Comprehensive Health Assessment (CHA) of the older person in health and aged care. Assessment template 2014.
- Standardised Care Processes (SCP) developed as part of the Strengthening Care Outcomes for Residents with Evidence (SCORE) project
- The NATFRAME (National Framework for Documenting Care in Residential Aged Care Services)
- Dementia Outcomes Measurement Suite
- Best Care for Older People Everywhere (BCOPE). The toolkit.

# Topic 5: Cognition

## The Cognition Topic

This topic focuses on cognition. Cognition is the set of all mental abilities and processes related to knowledge, attention, memory, judgement, reasoning, decision making, comprehension and language.

Cognitive deficits will impair a person's ability to function independently in performing everyday living activities, remembering things that have just happened, having insight into how others are feeling and will impact on how they interpret and respond to the environment and the people they are living with. This workbook aims to help you implement strategies that result in the best quality care outcomes for your residents with cognitive impairments.

## Investigating Cognition

This topic focuses on the investigation of cognition issues and follows the same four process steps used across all the workbooks. The steps are:

- 1. Preparation of staff** – ensuring that staff have the required qualifications or competencies and have completed background reading if required. The background reading includes:
  - Best Care for Older People Everywhere (BCOPE). The Toolkit (2012)
  - PAS-CIS User Guide

The references for these resources can be found in the Continence Appendix.

- 2. Identifying** – gathering the resident's history by collating documents and talking with residents and their family, looking for signs and symptoms in the initial nurse assessment, completing a comprehensive assessment approach and assessing the scope of the challenge. It is recommended that all new residents have a comprehensive assessment of cognition. A comprehensive approach will include:

File Notes Review:

- Aged Care Client Record (ACCR) – Parts 4 and 5 which includes diagnoses, assessment summaries and notes on cognition
- Comprehensive Medical Assessment – which (if available) may have, for example, relevant diagnoses and cognition status

## Cognition Topic

### Screen:

- Initial nurse assessment – e.g. the CHA which records information about the resident's cognition status (reference for this resource can be found in the Cognition Appendix and a copy in the Resource Pack)

### Further Assessment:

The following assessment tools are recommended for assessing cognition and identifying the person's care needs. It is recommended that all new residents have cognition assessed. The three recommended cognitive assessments for residents who are suitable to be interviewed are:

- Psychogeriatric Assessment Scales- Cognitive Impairment Scale (PAS-CIS) for residents that speak English.
- Kimberley Indigenous Cognitive Assessment (KICA-Cog) for suitable indigenous residents.
- Rowland Universal Dementia Assessment Scale (RUDAS) for suitable residents from diverse cultural learning and language backgrounds

The references for these assessment resources can be found in the Cognition Appendix and a copy of the tools are found in the Cognition Assessment Pack.

The SCORE Standardised Care Process for Delirium is also recommended for addressing systemic clinical risks of delirium. The SCP is found in the Resource Pack and is referenced in the Cognitions Appendix.

**3. Implementing** – based on the information from the identification phase this covers making needed referrals, selecting and trying interventions, writing a care plan, completing the ACFI and documenting the process. The steps are:

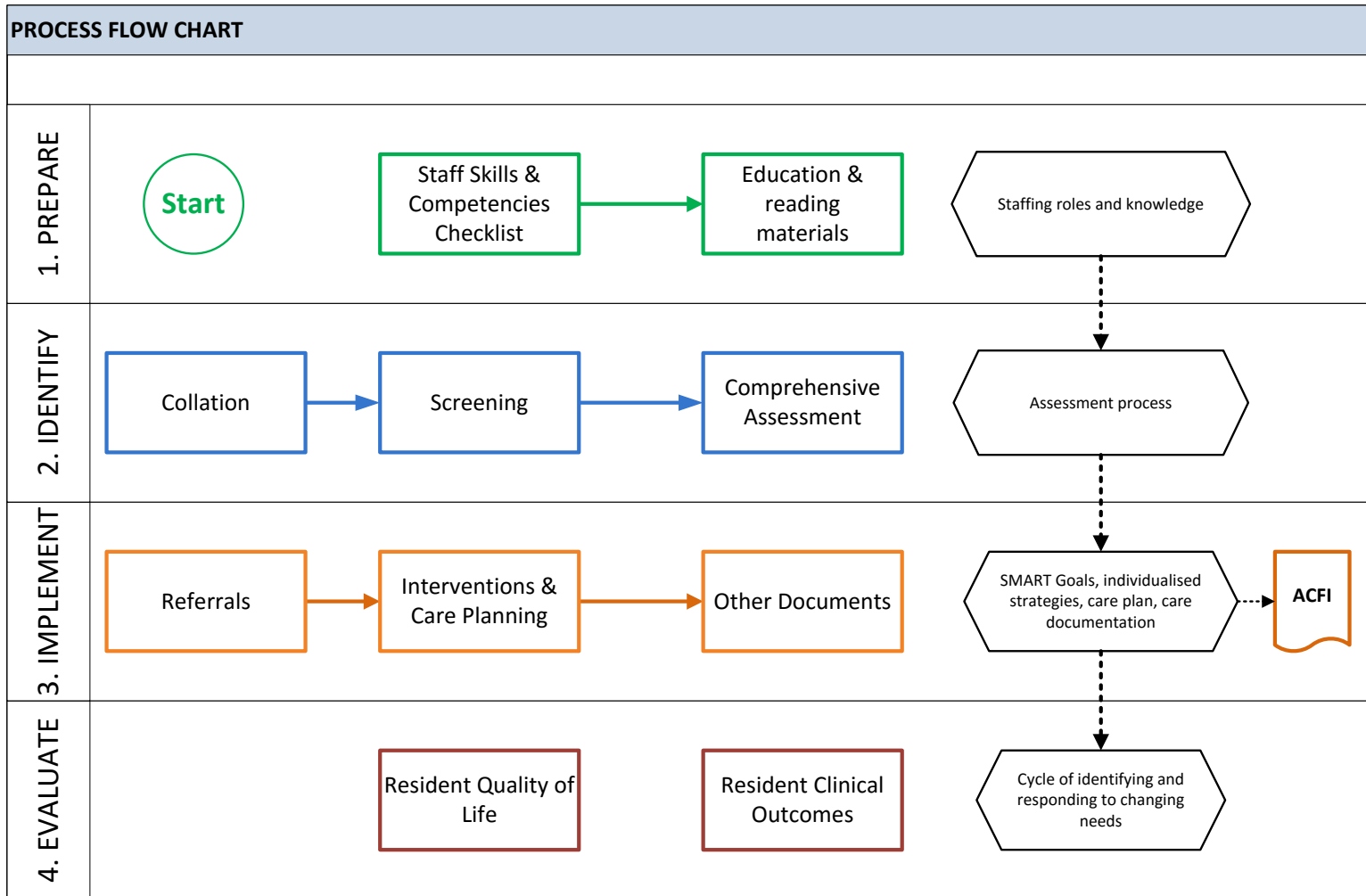
- Undertaking referral options to complete gaps or seek specialist advice
- Planning evidence-based care strategies to assist the person to maintain or possibly improve their participation ability
- Listening to and setting goals with the consumer (resident and family) to hear their understanding and personalise the approach
- Understanding the role of communicating the care needs, goals and strategies through care plans and resident file notes to provide the documentation trail
- Completing ACFI documentation

**4. Evaluating** – monitoring and evaluating the effectiveness of the process, interventions and looking for ways to further improve the care outcomes for residents.

The overall cognition process and associated activities is illustrated in Figure 1 which shows the phases (e.g. prepare, identify, implement, evaluate), the steps within each phase and the aim for each phase (e.g. have identified the care needs of the resident). Each topic of the Cognition Workbook follows the same pattern. Consistent application of this process will assist your facility to provide systematic, accountable care and facilitate the best possible resident care outcomes.

.

Figure 1: Cognition Process



## Getting Started with a Cognition Example

This case study will be referred to as we discuss the cognition topic.

*Maria Russo is an 85-year old woman who was a school teacher until she retired at 65 years of age. She never married, but she is very close to her niece Rosa. She had been living at home alone with the support of local community services, and her friend and neighbor (June) and her niece. She received home help and meals on wheels, and June visited most days while Rosa helped her manage her financial issues.*

*Maria has been an insulin-dependent diabetic since 65 years of age and she managed it safely. Her GP had noticed a slow deterioration over time in her memory, but at one visit Maria was looking unkempt and very confused. Her insulin levels were low and the GP called an ambulance. In hospital she was diagnosed with dementia and was assessed by the Aged Care Assessment Service. It was determined that she was not taking the correct insulin doses, her diet was not adequate, and she could not safely live alone at home. She required supervision with her ADLs and medicines.*

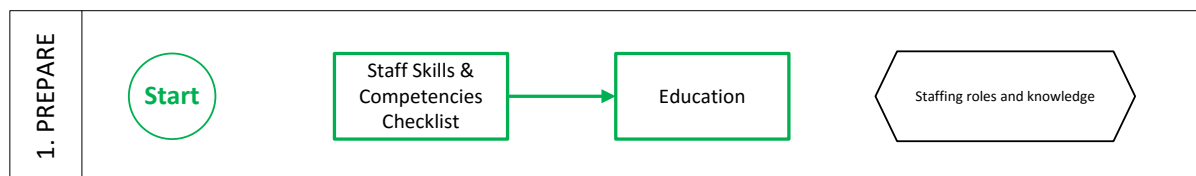
*One year ago she came to live at Sunset Home, with her diet and diabetes now under control, she has had no other major medical issues. With staff supervision, she has been able to participate in her personal hygiene and self-care needs. She does not initiate conversations but is able to respond to simple questions with short responses.*

*In the last monthly review, it was noted that Maria has stopped communicating verbally, and she now requires physical assistance with some nutrition and self care tasks, she seems to be deteriorating quite noticeably.*





## Preparation



There are two specific aspects to **preparing** staff for the management of resident cognition care needs. They are:

- 1) Selecting staff that have the required qualifications or competencies; and
- 2) Educating the staff on the topic, the assessments and process tools.

### Recommended Staffing Skill Set

Table 1 below provides a structure for management to identify which staff have the skills required to complete activities within the cognition process. The process includes:

- Identifying the required activities (examples provided in Table 1)
- Assessing staff competency to complete the activities
- Addressing identified gaps

This will assist management to select and determine the roles of staff to ensure the process can be completed effectively. For example, if there is a gap found in the cognitive assessment and management activity, the facility could consider further training of current staff, or securing a nurse with the required clinical knowledge, or identifying a local Allied Health Professional (i.e. Psychologist) who could complete the assessment.

The introductory guide also provides further instructions for management in preparation for implementing this toolkit.

**Table 1: Staff Activities for the Cognition Process**

Activity	Staff Resources
Collating Documents	
Identifying needs from the documents	
Screening : Initial Nurse Assessment e.g. CHA	
Mandated Assessment: PAS-CIS	

Activity	Staff Resources
Cognition Assessment: KICA-Cog	
Cognition Assessment: RUDAS	
Documenting into file notes	
Determine and action Referrals	
Develop Interventions, Goals and the Care Plan	
Complete ACFI associated documents	
Review/monitor the Care Plan & Goals	

## Background Reading

Staff should complete the background reading or be able to demonstrate that they have adequate experience and knowledge of cognition issues in older people. It is expected that staff will have:

- A comprehensive understanding of the domain and how it is impacted by other health areas
- An awareness of associated diagnoses, signs and symptoms of cognitive impairment and dementia
- Knowledge about and training on how to use the assessment tools
- Knowledge about evidence informed practices associated with cognition - to assist with the development and implementation of evidence-based care plans

The background reading relevant to the cognition topic is:

- Best Care for Older People Everywhere (BCOPE). The Toolkit (2012) pp. 127-158. The content is summarised in the following sections. Please note that the BCOPE was primarily written for hospital settings with intended transferability to a range of other care settings. The language and terminology used may not always suit residential aged care.
- PAS-CIS User Guide. This provides information from the original source on how to administer the PAS-CSI.

The references for these resources are found in the Cognition Appendix.

## *Some Basics*

It is important to understand why we assess cognition - what is cognition, why it is important, and how it affects resident care needs.

Cognition is the set of all mental abilities and processes related to knowledge, attention, memory, judgement, reasoning, decision making, comprehension and language. Cognitive deficits will impair a person's ability to function independently in performing everyday living activities, remember things that have just happened, have insight into how others are feeling and it will impact on how they interpret and respond to the environment and the people they are living with (Diagnostic and Statistical Manual of Mental Disorders 5<sup>th</sup> Edition, 2013).

For example:

- A person with attention symptoms may have difficulties in an environment with multiple stimuli (TV, radio, conversation), difficulty maintaining attention to an activity, with learning information or may just take longer to process information
- Decision making deficits affect the ability to be able to plan or multitask. Judgement deficits impact on the ability to follow rules
- Learning and memory deficits impact on ability to recall information or events, difficulty following a conversation, and often requires frequent reminders
- Language deficits may impact on the person's expressive language (use of words) and/or to understand what is being said to them. It also often results in the use of non specific phrases like 'that thing'
- Inability to carry out once familiar tasks (e.g. use a tool) or movements (e.g. how to use pen)
- There are also social impacts when a person cannot recognise others' emotions, or acts outside of acceptable social ranges

Cognitive disorders are also known as neuro-cognitive disorders, which include dementia, delirium, amnesia and other disorders (Diagnostic and Statistical Manual of Mental Disorders 5<sup>th</sup> Edition, 2013).

BCOPE (p. 127- 128) discusses the importance of understanding the difference between the 3 D's- delirium, depression and dementia. They share some cognitive symptoms, however they are different diagnoses and they have different management strategies. An early and

accurate diagnosis is crucial because impaired cognition is not a normal part of ageing, and the symptoms need to be managed appropriately. Delirium should always be investigated if there is an abrupt change in the mental state of a person with dementia.

People with dementia are vulnerable to both delirium and depression. For example, a person who is relatively newly diagnosed with dementia may have enough awareness of its devastating effects to be depressed. A person with dementia can forget how to adequately maintain daily activities such as remembering to drink enough fluids, and this can lead to an infection (e.g., urinary tract infection), which can develop into a delirium episode.

BCOPE (p.127) highlights the following differences between the 3 D's:

- “Delirium is an acute organic disturbance of higher cerebral function associated with an impaired ability to attend to the environment.
- Dementia is a general term used to describe a form of cognitive impairment that is chronic, generally progressive and occurs over a period of months to years.
- Depression is a multifaceted syndrome, comprising a constellation of affective, cognitive, somatic and physiological manifestations in varying degrees from mild to severe.”

Table 2 presents a further detailed comparison of delirium, dementia and depression (BCOPE, p.128) features.

Understanding the type and level of cognitive impairment helps in understanding what assistance the person needs. The impact of a cognitive impairment on an individual's way of life can vary greatly, from (i) those persons needing only temporary support (e.g. due to delirium) to (ii) minor or occasional support (e.g. assisting them to find their way with verbal supervising, setting up an activity which the person can then complete themselves) to (iii) those who require full physical assistance with all ADL tasks because they can no longer either physically do them due to severe cognitive impairment or they cannot remember how to participate in common daily activities.

While there is limited medical intervention for dementia, we can maintain a high quality of life in people with these conditions through our management strategies.

**Table 2: Comparison of features between Dementia, Delirium and Depression**

Feature	Dementia	Delirium	Depression
<b>Onset</b>	Slow and insidious – deterioration over months or years	Sudden – over hours or days	Often abrupt – may coincide with life changes
<b>Course</b>	Symptoms are progressive over a long period of time; not reversible	<ul style="list-style-type: none"> <li>• Short and fluctuating – often worse at night and on waking</li> <li>• Usually reversible with treatment of the underlying condition</li> </ul>	Typically worse in the morning. Usually reversible with treatment
<b>Duration</b>	Months to years	Hours to less than one month – not often longer	At least two weeks – can last for months or years
<b>Psychomotor activity</b>	<ul style="list-style-type: none"> <li>• Wandering/exit seeking or</li> <li>• Agitated or</li> <li>• Withdrawn (may be related to coexisting depression)</li> </ul>	<ul style="list-style-type: none"> <li>• Hyperactive delirium: agitation, restlessness, hallucinations</li> <li>• Hypoactive delirium: sleepy, slow-moving</li> </ul>	<ul style="list-style-type: none"> <li>• Usually withdrawn</li> <li>• Apathy</li> </ul>
<b>Alertness</b>	Generally normal	Fluctuates – may be hyper-vigilant through to very lethargic	Normal
<b>Attention</b>	Generally normal	Impaired – difficulty following conversation, fluctuates	Normal
<b>Mood</b>	Depression may be present in early dementia	Fluctuating emotions – for example: anger, tearful outbursts, fear	<ul style="list-style-type: none"> <li>• Depressed mood</li> <li>• Lack of interest in usual activities</li> <li>• Change in appetite (increase or decrease)</li> </ul>
<b>Thinking</b>	Difficulty with word-finding and abstraction	Disorganised, distorted, fragmented	Intact – themes of helplessness and hopelessness present
<b>Perception</b>	Misperceptions usually absent (can be present in Lewy body dementia)	Distorted – illusions, hallucinations, delusions; difficulty distinguishing between reality and misperceptions	Usually intact (hallucinations and delusions only present in severe cases)

## *How Cognition Interacts with Other Domains*

As noted in the introduction, cognition is important in almost all aspects of a person's daily living, affecting both their psychological well-being and functional ability. Here are a few examples of how cognition interacts with other domains:

### **ADLs**

Cognitive impairment can impact on the person's ability to perform or participate in all activities of daily living such as walking, dressing, bathing and maintaining personal hygiene.

### **Nutrition**

The more complex cognitive skills associated to shopping and cooking are usually lost before eating and drinking skills. In residential care a person's access to good nutrition may improve, but eventually they may forget how to use utensils and need increasing assistance.

### **Continence**

Continence issues arise as a person has difficulty with locating the bathroom and communicating the need for toileting. Eventually, they may lose the memory related to the procedure of toileting, and in severe dementia, may be completely incontinent.

### **Medication**

The side effects and interactions of various medications can impact on cognition. Cognitive impairment will impact on the person's ability to safely self manage medicines (e.g. remembering to take medicines, understanding the purpose of medicines etc), and in the case of a person with severe dementia, they will be fully dependent on staff assistance with medications.

### **Complex Health Care**

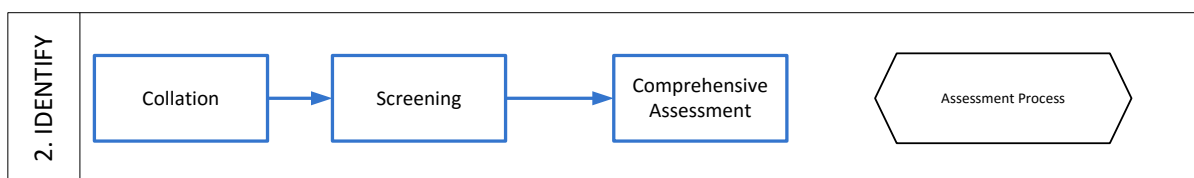
In severe dementia the person may become immobile, increasing the risk of skin integrity issues developing. As dementia advances, and the person's communication skills reduce, staff need to be alert to facial and body language that indicates pain is present.

### **Communication and Behaviour**

A person's ability to verbally express themselves diminishes with advancing dementia, and behavioural expressions may indicate a need. For example, wandering, pacing, agitation and aggression can all be signs of discomfort. As is illustrated as Mary's story unfolds, returning her to a state of comfort can greatly improve her wellbeing and also for those caring for her.



## Identification Process



The steps in the process of **identifying** care needs are:

- Gathering the history from current documentation and information from carers, family and consumer if possible
- Screening to identify a need (e.g. initial nurse assessment); and
- Completing a comprehensive assessment of the cognition needs

## Gathering the History

Before you start assessing, look at what documents you have which provide information on the resident? You will be able to build a picture of the person’s relevant history through current documentation (i.e. ACCR, medical notes) and their personal history through discussions with their family members and carers.

## Documentation

The current documentation should be reviewed, checking for relevant diagnoses, information on signs and symptoms and previous assessments. Below is an example of the types of documents to be collated and reviewed and the information that is being sought for cognition.

Document	Looking for
ACCR	Mental and Behavioural Diagnoses (Q28), cognitive behaviour/psychological aspects, comments and care strategies in part 5
Medical Notes/CMA	Mental and Behavioural Diagnoses, cognitive status, needs, aids and assistance
Clinical Report on Cognition	Mental and Behavioural Diagnoses, cognitive status, cognitive behaviour/psychological aspects, comments and care strategies
AHP notes/assessment	Mental and Behavioural Diagnoses, notes on how cognitive status impacts on other areas

Here are a few examples of how the collated diagnoses and issues may be indicators of the person’s care needs:



Diagnoses/issues	How it may impact on the care needs
Diagnosis or evidence of cognitive impairment	Because the cognitive signs and symptoms can lead to different diagnoses, an accurate diagnosis is essential for developing appropriate strategies and interventions.
Specific types of cognitive impairment	<p>Different types of cognitive impairment will be managed differently e.g. dementia, delirium, depression.</p> <p>Dementia will progressively get worse, strategies need to manage the increasing dependency of the person and try to maintain their participation. Medication may help with some symptoms in the early stages.</p> <p>Delirium can be reversed; interventions will focus on the medical treatment.</p> <p>Depression can be treated with both medication and non-pharmacological interventions (e.g. experiencing pleasant events, sleeping disorder strategies)</p>
How the level of cognitive impairment impacts on care needs	<p>Minimal impairment- most likely will have no significant problems with daily activities, minor memory loss, will have some issues with instrumental activities (e.g. handling money or solving problems).</p> <p>Mild impairment- starting to have some impact on personal care. Possibly disorientated in unfamiliar places, dependent on others for undertaking instrumental activities. May need minor or occasional support with ADLs e.g. more likely to need prompting not a lot of physical assistance.</p> <p>Moderate Impairment- most likely to require physical assistance with some ADLs. Possibly disorientated to time and place. Possibly reduced communication skills and inability to learn new materials easily.</p> <p>Severe impairment- likely to have no short term memory ability and only fragments of long term memory, requiring physical assistance (fully dependent) with nearly all aspects of care, and have severe communication impairments (e.g. speech disturbances).</p>
Activities of Daily Living/ Mobility aids/ Continence	As noted above, cognitive impairment can impact on the person's ability to manage everyday activities, requiring support with nutrition, personal hygiene, toileting and continence, and use of





	mobility aids.
Sensory Loss(e.g. sight, hearing)	Most likely to increase the effect of the cognitive impairment, making it more difficult for the person to participate in activities; may become withdrawn.
Communication issues of understanding others and/or communicating to others	Likely to have communication difficulties including understanding others and/or communicating to others
Behavioural and Psychological Symptoms of Dementia	<p>The person with dementia has increasing trouble deciphering and interacting with their environment and the people in it. They may have a compromised ability to:</p> <ul style="list-style-type: none"> <li>- communicate their needs</li> <li>- understand verbal requests</li> <li>- remember how to do basic activities (e.g. the planning and sequencing of activities of daily living that underpin personal care independence)</li> </ul> <p>They may also misinterpret their environment (e.g. hearing and seeing things, holding incorrect beliefs)</p> <p>Their discomfort and confusion may cause them to communicate through their behaviour.</p>



## *Resident and Family*

Because people with cognitive impairment often can't speak for themselves, or they don't remember their recent history accurately, it is important to include and seek input from care staff and family members.

The knowledge provided by care staff and the family about the person's cognitive functioning is often of crucial importance. They can share their knowledge of the person's medical history, changes in the person's cognitive state and provide details about the person's life story, routines, preferences, and communication style. All of this information is invaluable in understanding and better assisting the person with dementia (and other cognitive impairments). Because medical treatments for dementia are limited, it is our understanding of the individual that is most likely to have a positive impact on the life, health and wellbeing of the person.

Family and friends can assist staff better support and engage the person with dementia, for example (BCOPE p.143);

- The person with dementia will find familiar people and familiar items reassuring (i.e. photos from home, a specific cushion or dressing gown).
- Inform on how to calm the person during periods of confusion
- Life stories provide staff with conversation cues that they can use to initiate conversations with (i.e. significant life events, pleasant events, favourite pastimes, work history, personal history).

### ***Back to Maria Russo***

*Maria has become distracted at meal times now and often wanders off to go to the toilet mid meal at her lunchtime meal. She is also now so tired by the evening meal that staff have to often stop her dozing and remind her to eat.*

*She is also no longer an active participant in the activities she once enjoyed – she sits on the sidelines without speaking, and frequently gets up and walks away to a chair where she promptly falls asleep. She is communicating less but seems to understand what others say to her, but she tends to respond with a smile and then just looks away.*

*A medical review has been initiated, and care staff will review her cognitive status, staff progress notes and care plan. They have also asked her niece for some mementos from her teaching life. Rosa found some photos and an old blackboard eraser that she thinks will stimulate some interest from Maria.*



## Initial Nurse Assessment

All residents should have an initial nurse assessment such as the Comprehensive Health Assessment (CHA) of the older person in health and aged care. The CHA covers most domains and topics likely to impact on the health care needs of a person. Based on evidence informed practice, nurses (RNs and ENs) who have received training on a resource such as the Comprehensive Health Assessment of the Older Person (CHAOP) have the competencies to undertake a comprehensive health assessment.

The Comprehensive Health Assessment has items which record Neurological and Cognitive function in older people, although no specific validated tools are recommended. The box below presents the CHA items specific to the cognition domain:

<p><b>NEUROLOGICAL/COGNITIVE FUNCTION</b></p> <p>Subjective information (i.e. their perception of their memory, whether they have had any episodes of confusion, disorientation, history of headache, dizziness/vertigo, seizures, tremors, perception of gait, balance, difficulty in swallowing, difficulty in speaking) .....</p> <p>Conscious state – may require assessment with validated tool (Glasgow Coma Scale) Orientation to time and place.....</p> <p>Abstract thinking – explanation.....</p> <p>Concentration – carry out a task.....</p> <p>Memory:</p> <ul style="list-style-type: none"><li>• Immediate.....</li><li>• Recent.....</li><li>• Distant.....</li></ul> <p>Judgement – able to make a day to day decision.....</p> <p><b>COGNITION</b></p> <p>Normal    <input type="checkbox"/>    Impaired    <input type="checkbox"/>    Test or use of validated screening tool    <input type="checkbox"/></p>
--



## Comprehensive Assessment

For the cognition topic, it is recommended that all new residents have a comprehensive assessment. The recommended assessment approach for cognition involves:

- Identifying relevant diagnoses, cognitive impairments and cognitive status from the **resident history and family**. If objective evidence is found from the documentation review (e.g., a recently completed Mini Mental State Examination) that a person has no cognitive impairment, the facility may decide against further testing. But to provide valuable base information for all residents, it is recommended that they have a cognitive assessment at admission. Those with little or no cognitive impairment can be interviewed using one of the recommended tools.
- **Initial nurse assessment** (e.g., CHA which is referenced in the Cognition Appendix and a copy is found in the Resource Pack). Based on evidence informed practice, it is recommended that nurses (RNs and ENs) should undergo a CHAOP type training to be competent in a broad assessment that collects information across the domains. As the CHA is not a validated cognition assessment, the CHA cognition items should only be used to initially identify an issue.
- If a **resident can be interviewed**, then the recommended validated tools can be undertaken.
- If the **resident cannot be interviewed or the PAS-CIS is not suitable**, then the ACFI 6 checklist is used to determine the cognitive impairment level.
- When a resident is identified as having a possible **change in his or her cognitive status**, a cognitive assessment review is recommended.

Determine if the resident is suitable to be interviewed using the **PAS-CIS**, if yes then complete the PAS-CIS if the resident consents.

Refer to the ACFI User Guide page 25 for reasons the PAS-CIS may not be suitable.

- Nil or minimal cognitive impairment
- Cannot use PAS - CIS due to severe cognitive impairment or unconsciousness or have a diagnosis of 520, 530, 570 or 580
- Cannot use PAS - CIS due to speech impairment
- Cannot use PAS - CIS due to cultural or linguistic background
- Cannot use PAS - CIS due to sensory impairment
- Cannot use PAS - CIS due to resident's refusal to participate



### **Psychogeriatric Assessment Scales- Cognitive Impairment Scale (PAS-CIS)**

References for the following resources are found in the Cognition Appendix

- The PAS-CIS tool
- ACFI Assessment Pack
- PAS User’s Guide and materials

It is recommended that readers of this toolkit refer to the ACFI Assessment Pack and the PAS-CIS User Guide to support their assessment process. As the PAS-CIS is the mandatory cognitive assessment tool (when suitable) for claiming under ACFI 6, users should be familiar with its use. The Cognition rating can be derived directly from the PAS-CIS score.

There is also a YouTube video demonstrating a live cognitive assessment using the PAS-CIS at the **Dementia Outcomes Measurement Suite (DOMS)** website which provides a link to this resource (refer to the Cognition Appendix).

The readers are also referred to the **CHAOP (module 7)** as it discusses how to undertake cognitive assessments (refer to the Cognition Appendix and the Reading Pack).

When the PAS assessment tool is not suitable for a resident that can be interviewed and depending on their cultural background and level of cognitive impairment, we have provided two further assessments to help inform on completing the ACFI 6 checklist.

Determine if the resident is better suited to be interviewed using the **KICA-Cog** or **RUDAS** – if they are suitable then complete the appropriate assessment if the resident consents.

#### **Kimberley Indigenous Cognitive Assessment (KICA-Cog)**

The residents will need to be able to be interviewed and have given consent. The KICA-Cog is the only validated screening tool for older Indigenous Australians.

#### **Rowland Universal Dementia Assessment Scale (RUDAS)**

The residents will need to be able to be interviewed and have given consent. This is a short cognitive screening tool designed to minimise the effects of cultural learning and language diversity on the assessment of cognitive performance.

When using the KICA-Cog or RUDAS, the assessor will still have to identify the level of cognitive impairment based on the ACFI 6 checklist. However, the alternative assessment may assist in that determination and provide valuable information for your care planning. Remember that an assessment is not just a score, but the source of information to be considered when determining strategies for the care process. This will be discussed further in the Implementation section.

When you have identified a resident is unsuitable for the PAS, document the evidence to



support your decision. For these residents, the **ACFI 6 checklist** is used to identify the level of impairment based on their care needs assistance due to a cognitive impairment.

References for the assessment tools can be found in the Cognition Appendix, copies of the KICA-Cog and RUDAS can be found in the Cognition Assessment Pack, and a copy of the PAS-CIS in the ACFI Assessment Pack.

## Clinical Risk Management

To address systemic clinical risks associated to delirium, the following Standardised Care Process (SCP) is recommended:

- Standardised Care Process for Delirium

Reference for the recommended Standardised Care Process (SCP) is found in the Cognition Appendix and a copy of the SCP is found in the Resource Pack.

The Delirium SCP describes a systematic approach to addressing delirium from initial recognition, assessment, risk minimisation, referrals, including the resident and the family, monitoring the effectiveness, and addressing staff education requirements.

### Bringing the information together

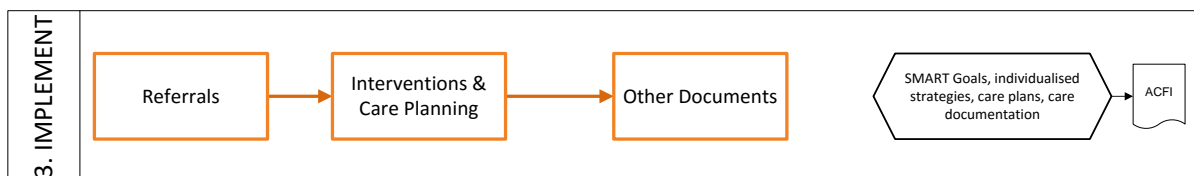
As is the case with all of the EBCAT topics, the assessor should use their clinical reasoning skills to consider the impact of interactions across assessments from the other domains and care topics on Cognition. These might include:

- Sensory impairment (e.g. as identified in an initial nurse assessment)
- Physical impairment (e.g. as identified in an initial nurse assessment)
- Behavioural issues (e.g. as identified in the Behaviour domain)
- Psychological/Psychiatric symptoms (e.g. as identified in the Cornell Depression Scale)
- Medications being taken as reported in the medication record or chart

Once you become familiar what you have to do (the steps) and how to do it (the process), the basics apply to all the topics and domains in this toolkit. You will however, always need to know how to apply it to individuals.



## Implementation Process



This phase of the toolkit demonstrates how to use the information gained from the identification phase to implement interventions and care planning.

The implementation process has three main aspects. These are:

- Undertaking **referrals as identified** to gather further needed information
- Designing **interventions** and developing **care plans that provide a coherent picture of what is to be done and why**;
- Completing **other documents** that support the care process, such as for the ACFI funding claims and daily documentation.

### Considering Maria's case study:

*The medical evaluation by her General Practitioner ruled out delirium, an infection, any medicine interactions and her blood sugars were well controlled by the insulin. She was however referred to the dietitian (as requested by her GP) to review her fluid and food intake as prevention against future dehydration and urinary tract infections. The dietitian ordered a supplement drink for Maria at tea time when she was tired and extra fluids during the day.*

*As Maria didn't talk much anymore, the interview based cognitive assessment (PAS-CIS) could not be completed. A cognitive review based on the ACFI 6 checklist indicated her dementia had progressed to severe. She now requires physical assistance with most ADLs (she doesn't initiate eating, personal hygiene etc), she is disorientated to time (needs cueing at meal times) and place (needs to be shown where the toilet, her bedroom etc), and she rarely demonstrates any fragments of speech. This resulted in the care plan being updated to reflect the need for increased assistance with ADLs.*

*The staff completed a depression assessment (CSDD) by observation and by using the staff and family as informants. While she didn't score above 8 (minimal signs of depression) she was showing a new behavioural symptom (she had lost interest in her usual activities) and a new physical sign (fatigue). She was quieter but still smiled a lot. New strategies were developed:*

*(1) To address the loss of interest the care staff were provided with new memory resources (photos and mementos) and showed how to use them to engage with and interest Maria. During daily activities they talked to Maria about their own school experiences and the teachers. Maria did not reply, but she listened and smiled.*

*(2) To address the fatigue, a regular nap was introduced in the afternoon. It was found*



*that after a nap, she awoke more alert for the rest of the hours she was up.*

*It appeared that Maria was naturally transitioning into a later, more dependent stage of Alzheimer's disease. While there is limited medical intervention for dementia, we can maintain a high quality of life in people with these conditions through our management strategies.*

## Referrals

If there is an identified need regarding medication or medical issues, then the matter should be directed to a Medical Practitioner (i.e. G.P.), who can implement treatments, or make referrals to medical specialists (i.e. geriatrician, psychogeriatrician).

If there is an identified need for further cognitive assessment, then a referral to a cognitive assessment service such as CDAMS (Cognitive, Dementia and Memory Service) or DBMAS (Dementia Behaviour Management Advisory Service) should be considered.

*“**CDAMS** is a specialist diagnostic clinic which aims to assist people with memory loss, or changes to their thinking, and those who support them. CDAMS provides:*

- Expert clinical diagnosis*
- Information on appropriate treatments*
- Education, support and information*
- Direction in planning for the future*
- Information on dealing with day to day issues*
- Linkages for clients or their family to other service providers or community supports*

*The Cognitive, Dementia and Memory Service (CDAMS) was developed by the Victorian Government in recognition of the need to provide a specialist multidisciplinary diagnostic, referral and educational service for people experiencing memory loss, or changes to their thinking, and for those who care about them.*

*Early diagnosis is important to determine appropriate treatment needs and to plan for the future. It provides people with a timely opportunity to learn about their condition, understand changes as they occur and to cope with day to day issues of cognitive impairment. Anyone experiencing changes to their memory and thinking, or those who support them, are welcome to contact CDAMS. Referrals can be made through general practitioners, community agencies or by self-referral directly to CDAMS.<sup>1</sup>”*

*Victoria's **Dementia Behaviour Management Advisory Service (DBMAS Vic)** operates under the auspices of St Vincent's Health, Melbourne Aged Psychiatry Services.*

<sup>1</sup> Ref date 18/7/2014, at <http://www.health.vic.gov.au/subacute/cdams.htm>





*Partnerships include: Victorian Aged Persons Mental Health Service, Alzheimer's Australia Victoria, The National Ageing Research Institute (NARI).*

*DBMAS Vic aims to improve the quality of life for people with dementia whose behaviour is having an impact on their care by improving the capacity of care workers, family carers and service providers to meet their specific needs. We predominantly provide services to care workers, aged care service providers and carers of people with dementia who receive support through Australian Government funded aged care services.*

*DBMAS Vic is staffed by a multidisciplinary team of clinicians from nursing, psychology, occupational therapy and old age psychiatry backgrounds. All DBMAS clinicians have extensive experience in dementia care.*

*DBMAS services are focused on the management of behavioural and psychological symptoms of dementia (BPSD) and include:*

- *Assessment of the person with dementia and their carer/support network*
- *Clinical support, information and advice (face to face and via telephone or email);*
- *Care planning, case conferences, referrals and short term case management;*
- *Mentoring for care providers and clinical supervision*
- *Education and training on BPSD for care providers.*
- *Help to link to current research, literature and evidence based practice guidelines relevant to dementia and BPSD*
- *More general issues relating to dementia care, support and education will be managed through the **National Dementia Helpline 1800 100 500.***

*DBMAS Vic also aims to support people with other diverse needs and covers:*

*Translation and Interpreting services are available to assist with referrals to DBMAS Vic for clients from Culturally and Linguistically Diverse (CALD) backgrounds*

*Use of the translated Alzheimer's Australia Help and Advice sheets*

*Behaviour consultants with Aboriginal and Torres Strait Islander and CALD portfolios have undertaken cultural sensitivity training and can also provide advice on specific cultural resources related to dementia.*

*Advice and support that is relevant to other special needs groups such as those with atypical dementia, younger onset dementia, learning disability and dementia<sup>2</sup>.*

We recommend that the management group develops referral lists based on what your health service can provide, what is available in your local area and a list of important website contacts to find a practitioner or advice (Table 3).

<sup>2</sup> Reference date 18/7/2014, at <http://dbmas.org.au/your-state/vic/>

**Table 3: Referrals for Cognition**

Health Professional	Source	Contact
Medical Practitioner	Health Service X	Name, contact details
Geriatrician	Health Service X	Name, contact details
Psychogeriatrician	Health Service X	Name, contact details
Cognitive assessment service such as CDAMS	Health Service X	Name, contact details
DBMAS	Health Service X	Name, contact details

## Interventions

In the identification phase, the resident’s healthcare and personal needs were identified. The intervention program will address these identified issues by developing strategies to improve or maintain the resident’s health status and their quality of life.

The intervention program should involve evidence informed strategies that address the cognitive needs, and importantly the strategies should be specifically tailored for each individual to be most effective. The approach and actions you use to support one resident may be very different from those implemented for another resident.

When designing interventions consider the resident history and personal preferences, the assessment outcomes, the context the strategy will operate in (i.e. the physical environment, the social environment), the knowledge and attitudes of staff, residents and family, and the types of resources required and their availability. Interventions are likely to be medical, psychosocial, educational or nursing in nature.

It is also important that all staff follow a systematic process when implementing an intervention ‘program’. This will increase the likelihood of your intervention’s success. Having a systematic process which you can describe will also enable other staff to repeat your interventions if they prove successful.

### **Dementia Care Principles to support a good quality of life for the resident**

To provide a good quality of life for all residents requires a system approach- with support from your broader systems, care services, environment and staff. Consider if your facility enacts the following:

- Principles of Person-Centred Care (PCC) to support self-determination, enjoyment of life, dignity and respect, participation in meaningful activities and a purposeful role



- The board of management recognises and addresses good dementia care through strategic planning
- The built environment is dementia friendly, it is homelike, has domestic size, is safe for the person and the staff, and provides privacy
- Specialist support services are in place (e.g. an effective referral system and access to specialist support for staff is available)
- Staff knowledge and dementia skills are identified and supported with education and training opportunities
- The facility and staffing model of care are designed to support the person with dementia to live well by providing staff to meet the resident needs when required
- Evaluation of care processes and outcomes is in place to ensure a high standard of dementia care practices and behavior management.
- Use a range of informants in the identification and assessment process to extend the knowledge of the individual.

The above considerations are also supported by the **NICE (National Institute for Health and Care Excellence)** approach<sup>3</sup>. They have developed ten quality statements to demonstrate how quality standard statements can support best practice care that is designed to enable people to live well with dementia.

**The 10 NICE quality statements are<sup>4</sup>:**

1. People with dementia receive care from staff appropriately trained in dementia care.
2. People with suspected dementia are referred to a memory assessment service specialising in the diagnosis and initial management of dementia.
3. People newly diagnosed with dementia and/or their carers receive written and verbal information about their condition, treatment and the support options in their local area.
4. People with dementia have an assessment and an ongoing personalised care plan, agreed across health and social care that identifies a named care coordinator and addresses their individual needs.
5. People with dementia, while they have capacity, have the opportunity to discuss and make decisions, together with their carer/s, about the use of:
  - Advance statements
  - Advance decisions to refuse treatment
  - Lasting Power of Attorney
  - Preferred Priorities of Care.

<sup>3</sup> <http://www.nice.org.uk/guidance/QS1/chapter/How-this-quality-standard-fits-into-the-NICE-Pathway>

<sup>4</sup> <http://www.nice.org.uk/guidance/qs1/chapter/list-of-statements>



6. Carers of people with dementia are offered an assessment of emotional, psychological and social needs and, if accepted, receive tailored interventions identified by a care plan to address those needs.

7. People with dementia who develop non-cognitive symptoms that cause them significant distress, or who develop behaviour that challenges, are offered an assessment at an early opportunity to establish generating and aggravating factors. Interventions to improve such behaviour or distress should be recorded in their care plan.

8. People with suspected or known dementia using acute and general hospital inpatient services or emergency departments have access to a liaison service that specialises in the diagnosis and management of dementia and older people's mental health.

9. People in the later stages of dementia are assessed by primary care teams to identify and plan their palliative care needs.

10. Carers of people with dementia have access to a comprehensive range of respite/short-break services that meet the needs of both the carer and the person with dementia.

### Using information about the type of cognitive impairment

Staff may have a diagnosis or a clinical report that identifies the location of the impairment. Understanding what parts of the brain have been impaired also helps to understand the strengths and weaknesses of the person with the cognitive impairment. This information can then be used to understand the behavior and how you can support the person better. It can also be used to support the ACFI 6 checklist when the PAS-CIS is not completed. For example damage to particular parts of the brain impacts on some specific functions, for example:

Location	Explanation
Frontal lobes	Affects organising skill, problem solving, personality, regulating social behavior, starting and stopping actions. Executive functions such as planning, decision making, working memory, responding to feedback, error correction, inhibition, mental flexibility. e.g. They may display socially inappropriate behaviour
Temporal lobes	Storing new information, short term memory, long term memory, distinguishing sounds and smells e.g. Be unable to follow more than one command at a time
Parietal lobes	Language and reading, spatial perception, touch and pressure, judgement of size and shapes. Creates our perception of the world based on what we feel, hear, and see. e.g. Hand-Eye In-coordination



Location	Explanation
Occipital lobes	Visual reception, recognition of colours and shapes e.g. Visual hallucination
Limbic system	It includes the hypothalamus, the hippocampus, the amygdala, and several other nearby areas. It appears to be primarily responsible for our emotional life, and has a lot to do with the formation of memories. Regulates sleep and appetite.

### Using information from assessment outcomes

The outcomes from a cognitive assessment not only provide a cut off score for criteria purposes, the individual responses more importantly also inform on specific strengths and areas of difficulty for the person. This information can be used to understand how you may support the person better.

First, a broader look at neuro-cognitive disorders (NCD). The term neuro-cognitive disorder (NCD) is now widely used in place of 'dementia' (Diagnostic and Statistical Manual of Mental Disorders, 5<sup>th</sup> Edition). The DSM-5 (Diagnostic and Statistical Manual of Mental Disorders, 5<sup>th</sup> Edition) classifies each neuro-cognitive domain as either mild or major, and dementia is now subsumed under the new entity of a major neuro-cognitive disorder (NCD).

The criteria for a neuro-cognitive disorder includes a significant decline in one or more of the following cognitive domains (Diagnostic and Statistical Manual of Mental Disorders, 5<sup>th</sup> Edition, 2013):

Complex attention	Sustained attention, divided attention, selective attention, processing speed. e.g. major difficulties - will have difficulty in environments with multiple stimuli (TV, radio, conversation); difficulty holding new information, thinking takes longer.
Executive functioning	Planning, decision making, working memory, responding to feedback, error correction, inhibition, mental flexibility. e.g. major difficulties - needs to focus on one task at a time, relies on others to plan and make decisions
Learning and memory	Immediate memory, recent memory (free recall, cued recall, recognition memory), long term memory (semantic, autobiographical, implicit learning).



	e.g. major difficulties - repeats self in a conversation, requires frequent reminders to orient to task.
Language	Expressive and receptive. e.g. major difficulties - significant difficulty with expressive or receptive language, may not recall family names
Perceptual motor	Visual perception, visuo-constructional, perceptual-motor, praxis, gnosis e.g. major difficulties -often confused at dusk and with changing light levels, significant difficulties with previously familiar tasks.
Social cognition	Recognition of emotions, theory of mind. e.g. major difficulties – has little insight, may show insensitivity to social standards of modesty or sexual conversations, makes decisions without regard to safety

The mandatory assessment tool - the Psychogeriatric Assessment Scales- Cognitive Impairment Scale (PAS-CIS) - can also provide valuable information when developing care strategies around cognitive impairments. While the PAS-CIS is a cognitive screen, not a diagnostic tool, and it does not investigate all of the neuro-cognitive domains, the items can help you to understand some of the capabilities of the person. For example:

Area	PAS-CIS	An incorrect response...
Language	Q1: write a sentence	Impaired reading and writing- the person cannot provide written responses or follow written cues.
Memory	Q2: Registration - name the three objects Q5: - repeat the name and address	If memory is compromised, then do not complete higher level cognitive testing. Provides insight into attention and duration of period of focus.
Memory (Episodic recall)	Q2: Re-call the three objects Q5: recall name and address	Episodic memory is the recollection of where and when events happened in one's own experience. The person will not be able to recall information, such as whether a relative has visited, or how long they have been somewhere.
Memory (Semantic recall)	Q3: Famous people Q4: New years	Semantic memory is a person's knowledge about the world e.g. facts about events. Usually deteriorates later than episodic memory.



Area	PAS-CIS	An incorrect response...
	eve	The person may have lost access to well learned knowledge- they will not know why they are in the facility, are unlikely to recognise close relatives, and may have loss of recall of earlier life activities.
Perceptual Motor (Praxis- Ideomotor)	Q7/8: Read aloud and do the action	The inability to execute a learned purposeful movement is called apraxia.  Reading a sentence is also testing language skills.  If they cannot do the action they will probably not respond to verbal requests to undertake some daily activities like showering or toileting independently.
Perceptual Motor (Praxis - Constructional)	Q6: Copy the drawing	Loss of skill in ordering processes to make up a whole sequence, so they cannot complete an entire activity like bathing.
Perceptual Motor (Gnosis - Visual)	Q9: What objects are seen in the picture	Agnosia is the loss of ability to recognise objects, persons, sounds, shapes, smells (when the specific sense is not defective).  The person is no longer able to make sense of the complexity of the sensory world. This is associated with sundowning behavior, misunderstanding of things seen (e.g. phantom spouse or other delusional phenomena). They are likely to become agitated and distressed due to the misperception.

### Medicines

Medicines are available in Australia to help with the cognitive (memory and thinking) issues of dementia for people with Alzheimer's disease. These medicines might be useful for people with vascular dementia or Lewy body disease.

Many people with dementia also experience depression and medicines can assist with this.

People with dementia may experience anxiety, panic attacks or (unreasonable) fearfulness. Mild symptoms can be assisted with reassurance, environmental or routine adjustments. Severe symptoms may be treated with medicines if the benefits outweigh the unwanted side effect.



Sleep disturbances can also be associated with dementia (e.g. waking at night and wandering), however the benefits of medicine needs to be considered against the side effects of associated sedation at other times<sup>5</sup>.

## Care Planning

A comprehensive care plan will be more than a summary of care needs, it will be individualised for each resident and reflect an understanding of their story, history, preferences and care needs.

Facilities may have their own care plan or the NATFRAME Care Profile could be used as a starting point e.g. as a summary care plan. Although the NATFRAME Care Profile will probably not record enough details for your facility, it is an example of how to collect and document information in a systematic, professional and accountable manner (the resource reference is found in the Cognition Appendix)

## Linking the Evidence

This is about showing the link between the evidence from the background and assessment information (what has been collected in the identification phase) and the care that has been provided to address the identified care needs (in the implementation phase).

The links are:

- Begin by looking at and noting any underlying issues (e.g. diagnosis of dementia) or symptoms (e.g. behaviour changes), connect the link to the body structures and/or functions that are impacted (e.g. reduced ability to self-care in ADLs)
- Describe the associated activity limitations (e.g. reduced social interaction). It's important to look at remaining strengths (e.g. personal interests)
- Describe the intervention program and how it addresses the limitations to assist the resident to improve or maintain his or her status and ensure continued participation in a quality life (e.g. new memory tools to comfort the resident)
- Finally, define the care goals (e.g. reduce fatigue) and resident goals (e.g. provide social interaction) that will be evaluated. Goals give purpose to the care and provide a measurement for evaluating the outcomes.

Below is an example of linking the evidence based on our case study of Maria:

---

<sup>5</sup> [http://www.betterhealth.vic.gov.au/bhcv2/bhcarticles.nsf/pages/Dementia\\_explained](http://www.betterhealth.vic.gov.au/bhcv2/bhcarticles.nsf/pages/Dementia_explained)





- There was a diagnosis of diabetes and dementia, and recent changes in the level of independence with ADLs, increased fatigue and loss of interest was evidenced in Medical Notes and Progress Notes.
- From the identification process, we identified the body structures/ functions that were affected. The dementia progression had further reduced her ability to self-care and reduced the opportunities for social interaction. This was evidenced in the latest Cognitive and Depression assessments.
- Strategies and subsequent interventions were developed to address the activity limitations by the use of memory cues to assist staff interact with a personal topic of interest of Maria (addressing quality of life), a nutrition approach (extra fluids etc) and an afternoon nap to reduce fatigue. This was evidenced in the updated Care Plan and notes.
- The aims of the care plan can then be defined as goals that will be evaluated e.g. to provide daily nutritional supplements to protect Maria's hydration and nutritional status, staff to communicate using the memory cues during ADLs, provide increased physical assistance with ADLs). Evidenced in the updated Care Plan.

## Goal Setting

Moving beyond compliance to ACFI evidence requirements, the care planning should also address setting goals based on clinical outcomes and the resident's perspective on their care needs and what is important to maintain their quality of life. It is recommended that a **Quality Of Life** (QoL) questionnaire be used to ascertain the resident's view of their quality of life. This could be implemented during the resident/family meeting to sign off on the Care Plan. The goals developed with the resident/family should cover **resident QoL, clinical outcomes** and **quality care outcomes** to address a wide range of documentation needs (i.e. consumer satisfaction and clinical expectations).

**SMART Goals** are an example of a standardised approach to goal setting with measurable outcomes. The SMART acronym ([www.projectsmart.co.uk](http://www.projectsmart.co.uk)) stands for goals that are:

- **Specific**, that is, they provide clarity, focus and direction.
- **Measurable** - Objective measures can demonstrate the effectiveness of the goals.
- **Action-oriented**, that is, they provide a strategy for achieving them.
- **Realistic** – because if they're not, we're just setting up for almost certain failure that will then impact on the residents motivation, interest and involvement; and
- **Time-based**, meaning for a specific duration. That enhances their ability to be measured and re-evaluated on an ongoing basis.



Below is an example of how to document one of Maria's goals using the SMART goal approach:

- Specific e.g. to improve social interaction opportunities
- Measureable e.g. staff to record when they use the new memory tools
- Actions e.g. develop the memory tools and guidelines
- Realistic e.g. you have staff with the skill set to develop the memory tools and guidelines, the resident's family has agreed to the strategy
- Time based e.g. you set the evaluation date at one month after the commencement of the new strategy by reviewing the progress notes and intervention chart, and interviewing the family and staff.

## Role of Documentation

Documentation of care is essential because members of the care team are accountable for their actions and decisions when providing care to a resident. Accountability is also a vital function of professional, legal, accreditation and funding mechanisms and processes.

Documentation is also a communication tool about what has been investigated and the information collected, what interventions have been tried for a particular problem with a particular resident and to identify what is and isn't working. It's a communication tool that can help all staff give the best possible care.

Good documentation supports the process which drives the care. It should incorporate evidence informed practices, assessments and interventions, utilise staff skills and drive a quality care approach.

The documentation process should leave a trail that provides robust and accountable information. The documentation is the basis of an evidence profile which provides objective and transparent information for the reason that assistance is or is not required. This supports the ACFI claim which is an outcome of the process, not a driver.

The process for documenting care is as follows:

- Summarise the relevant points from the collated background information and personal history
- Record the assessment and referral outcomes
- Record the identified capabilities and need for assistance following an analysis of the background information and assessment outcomes. This forms the basis of an



evidence profile which provides objective and transparent information about the reason that assistance is or is not required.

- Prepare the care plan with details on the care to be provided, why, and the residents goals and desired outcomes (in consultation with the family if appropriate) Record the evaluation of the care provided and the resident's response to the care and quality of life outcomes
- Continue to document new activities or identified issues (e.g. developed strategies and changes to care planning) in the progress notes and in the care plan, as this assists the information and communication flow and allows the process to be tracked for quality purposes.



## Completing the ACFI documentation

The data collected can now be used to complete the **ACFI 6 assessment summary and checklists** as described in Tables 4 to 6.

**Table 4: ACFI Question 6 Cognitive Skills Assessment Summary**

ACFI 6 Cognitive Skills Assessment Summary	Where to find the information
No PAS undertaken – and nil or minimal cognitive impairment	Care plan, summary care plan, progress notes, Clinical Report
Cannot use PAS due to severe cognitive impairment or unconsciousness	ACCR, Medical Practitioner notes, CMA, AHP notes, Clinical Report, Care plan, summary care plan, progress notes
Cannot use PAS due to speech impairment	Documented speech impairment in - ACCR, Medical Practitioner notes, AHP notes, noted in the Carer Plan, summary care plan, progress notes.
Cannot use PAS due to cultural or linguistic background	Documented demographic information in the -ACCR or Medical Practitioner notes, AHP notes. Noted in the Care Plan, summary care plan, progress notes.
Cannot use PAS due to sensory impairment	ACCR, Medical Practitioner notes, AHP assessment or notes, documented impairments in summary care plan
Cannot use PAS due to resident's refusal to participate	Noted in the Care Plan, summary care plan, progress note, PAS-CIS assessment form
Clinical report provides supporting information for the ACFI 6 appraisal	Clinical Report related to cognitive status. A clinical report for these purposes is a report that has been completed by <b>consultants</b> in the following disciplines: <ul style="list-style-type: none"> <li>- general or specialist medical practitioner, physician,</li> <li>- geriatrician or psychogeriatrician</li> <li>- registered psychologist</li> <li>- nurse practitioner or clinical nurse (mental health).</li> </ul>
Psychogeriatric Assessment Scales- Cognitive Impairment Scale: enter score	PAS-CIS assessment form



If the PAS-CIS was completed then the score can be used to complete the checklist (Table 5).

**Table 5: ACFI Question 6 Cognitive Skills Checklist (abbreviated)**

ACFI 6 Cognitive Skills Checklist	Where to find the information
<b>1 No or minimal impairment</b> PAS = 0–3, including a decimal fraction below 4	PAS-CIS assessment
<b>2. Mild impairment</b> PAS = 4–9, including a decimal fraction below 10	PAS-CIS assessment
<b>3 Moderate impairment</b> PAS = 10–15, including a decimal fraction below 16	PAS-CIS assessment
<b>4 Severe impairment</b> PAS = 16–21	PAS-CIS assessment

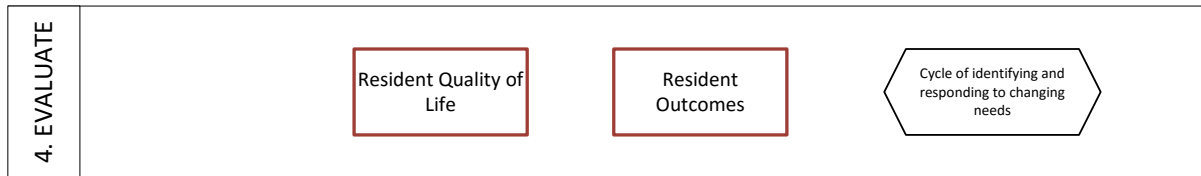
If the PAS-CIS was not completed, then indicate which checklist item best represents the resident’s impairment (Table 6). Remember to keep track of which document provides the supporting information for your selection.

**Table 6: ACFI Question 6 Cognitive Skills Checklist (detailed)**

ACFI 6 Cognitive Skills Checklist	Where to find the information
<p><b>1. No or minimal impairment</b>            No significant problems in everyday activities. Demonstrates no difficulties or only minor difficulties in the following—memory loss (e.g. may forget names, misplace objects), handling money, solving problems (e.g. judgement and reasoning skills are intact), cognitively capable of self-care</p>	ACCR, CMA, Allied Health notes, care plan, progress notes, clinical reports, alternative cognitive assessment
<p><b>2. Mild impairment</b>            May appear normal but on investigation has some problems in everyday activities.            Memory and personal care: memory loss of recent events that impacts on ADLs (i.e. needs prompting not physical assistance)            Interests: not independent in chores/ interests requiring reasoning judgement, planning etc. (i.e. cooking, use of telephone, shopping).            Orientation: disorientation in unfamiliar places</p>	ACCR, CMA, Allied Health notes, care plan, progress notes, clinical reports, alternative cognitive assessment
<p><b>3. Moderate impairment</b>            Has significant problems in the performance of everyday activities, requires supervision and some assistance.            Memory: new material rapidly lost, only highly learned material retained            Personal care: requires physical assistance with some ADLs (e.g. personal hygiene, dressing) Orientation: disorientation to time and place is likely            Communication: possibly fragments of sentences, more vague</p>	ACCR, CMA, Allied Health notes, care plan, progress notes, clinical reports, alternative cognitive assessment
<p><b>4. Severe impairment</b>            Has severe problems in everyday activities and requires full assistance as unable to respond to prompts and directions.            Memory: only fragments of past events remain            Personal care: requires full assistance with most or all ADLs            Orientation: orientation to person only            Communication: speech disturbances are common</p>	ACCR, CMA, Allied Health notes, care plan, progress notes, clinical reports, alternative cognitive assessment



## Evaluation Process



The evaluation process considers:

- Resident Quality of Life outcomes

Assess if the resident's life is better? In what ways? e.g. happier, healthier. What might have produced this outcome? This could be determined by revisiting the Quality of Life questionnaire or by interviewing the resident and/or family.

- Resident Care Outcomes

Have the memory tools been regularly implemented? Has Maria shown interest in this activity?

Has the nutritional supplement been acceptable to Mary? Has it improved her level of self-care at the tea-time meal?

Has Maria shown less fatigue after the afternoon naps?

- Further improvements

What needs re-assessing, what could be implemented in a slightly different way?

Evaluation involves a systematic determination of the intervention outcomes, to ensure quality care is being provided. The goal setting stage provides criteria or measures to determine success or otherwise of the intervention. The criteria can be quantitative or qualitative.

The primary purpose of evaluation is to identify the effectiveness of the intervention, to guide further improvements to the interventions to achieve the desired outcomes, and to identify emerging new issues. The finding of new issues would trigger a return to the identification phase.

Evaluation forms the basis of the iterative process that leads to a cycle of continuously improving the quality of the care provided.



## Outcomes

Mary's niece met with the members of the care planning staff to evaluate how far they have come and discuss any changes that needed to be made. They reviewed the file notes, including the notes and assessments made by Mary's doctor, care and dietitian. They also assessed the outcomes against the goals included in her care plan one month after it was written. They found that overall it was positive:

- Maria appeared to enjoy the the staff interactions during ADL assistance as shown by her settled and calm behavior and smiling with staff when looking at the photos.
- The afternoon nap had provided some needed rest for Mary, and she was alert and not agitated in the late afternoon and early evening, and she was sleeping well throughout the night.
- Maria was able to manage the nutritional supplement (after the drinking activity is initiated by the staff).
- There have been no signs of dehydration or urinary tract infections.





## Summary: Steps and Information Flow

Figure 2 shows the cognition topic phases and steps in the process. It involves:

### **The Identification phase which comprises:**

- Collation of history from documentation and resident/family interviews
- Initial Nurse Assessment as a screen
- Completing the Comprehensive Assessment (PAS-CIS, RUDAS, KICA-Cog if appropriate; Cognitive Checklist)

### **The implementation phase which comprises:**

- Completing referrals as required to fill in assessment gaps or for specialist advice
- Analysing the information to develop strategies based on evidence informed practice
- Setting goals with the resident and family and completing the care plan
- Documenting the evidence steps and completing the ACFI

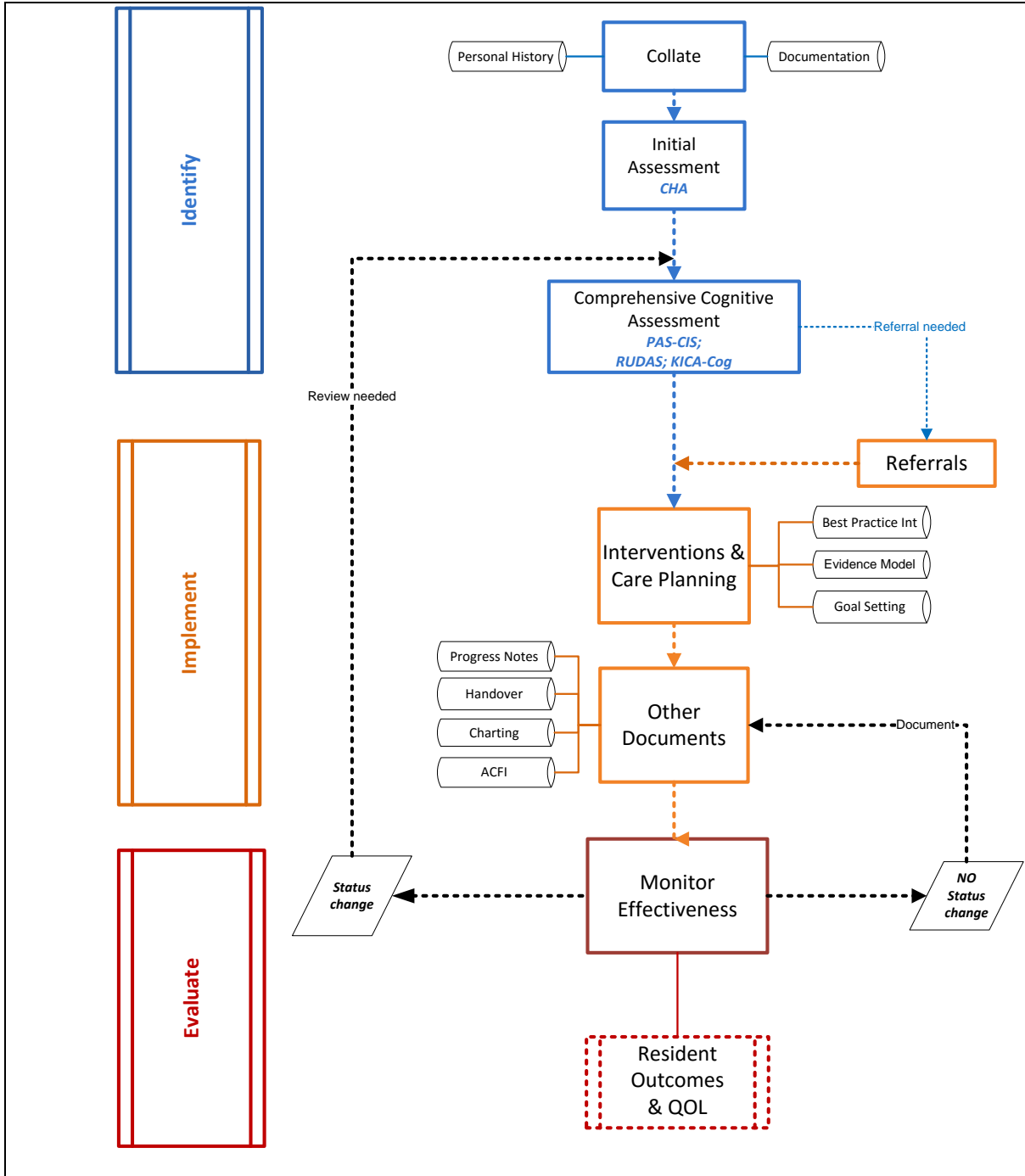
### **The evaluation phase which comprises:**

- A review of the effectiveness of the interventions on resident outcomes  
Monitoring the progress and effectiveness of the interventions will inform if any changes should be considered
- If a review is required, then at this point the process returns to the identification phase and the associated steps
- Completing Standardised Care Processes to address any systemic clinical risk management issues (Delirium)

**The Evidence Based Clinical Assessment Toolkit (EBCAT) is so named because evidence gives us a reason to follow a particular plan toward improved care.**



Figure 2: Cognition Information Flow



## Cognition Resources

The recommended resources and information on where they are found in the toolkit are listed below (Table 7).

**Table 7: Cognition Workbook Resources**

Resource Type	Details	Document
Background Reading	BCOPE pp. 127-158	Resource Pack
Background Reading	PAS-CIS User Guide	Facility to download
Screen	Initial Nurse Assessment (e.g. CHA)	Resource Pack
Mandated Assessment	PAS-CIS	ACFI Assessment Pack
Cognition Assessment	KICA-Cog	Cognition Assessment Pack
Cognition Assessment	RUDAS	Cognition Assessment Pack
Standardised Care Process (SCP)	Delirium	Resource Pack
QoL questionnaire	Quality Of Life Questionnaire	Resource Pack
Goal setting example	SMART Goals	Resource Pack

## Cognition References

The recommended resources and references are provided in Table 8.

**Table 8: References for the Cognition Workbook**

Document name	Reference
ACFI Assessment Pack October 2014	Sourced from the DSS website <a href="https://www.dss.gov.au/our-responsibilities/ageing-and-aged-care/aged-care-funding/residential-care-subsidy/basic-subsidy-amount-aged-care-funding-instrument/aged-care-funding-instrument-acfi-assessment-pack">https://www.dss.gov.au/our-responsibilities/ageing-and-aged-care/aged-care-funding/residential-care-subsidy/basic-subsidy-amount-aged-care-funding-instrument/aged-care-funding-instrument-acfi-assessment-pack</a>
ACFI User Guide October 2014	Sourced from the DSS website <a href="https://www.dss.gov.au/our-responsibilities/ageing-and-aged-care/aged-care-funding/residential-care-subsidy/basic-subsidy-amount-aged-care-funding-instrument/aged-care-funding-instrument-acfi-user-guide">https://www.dss.gov.au/our-responsibilities/ageing-and-aged-care/aged-care-funding/residential-care-subsidy/basic-subsidy-amount-aged-care-funding-instrument/aged-care-funding-instrument-acfi-user-guide</a>
Best care for older people everywhere. (BCOPE)	Department of Health Victoria (2012) Best care for older people everywhere. The toolkit. <a href="http://www.health.vic.gov.au/older/toolkit/index.htm">http://www.health.vic.gov.au/older/toolkit/index.htm</a>
Better Health Channel	<a href="http://www.betterhealth.vic.gov.au/bhcv2/bhcarticles.nsf/pages/Dementia_explained">http://www.betterhealth.vic.gov.au/bhcv2/bhcarticles.nsf/pages/Dementia_explained</a>
Comprehensive Health Assessment (CHA) of the older person in health and aged care. Assessment template 2014.	Authors: La Trobe University ACEBAC Sourced from the Department of Health Victoria The CHA is an example of an initial nurse assessment.
Comprehensive Health Assessment of the Older Person (CHAOP)	Authors: La Trobe University ACEBAC Sourced from the Department of Health Victoria Resource developed for comprehensive health assessment training for PSRACS (2013).
Cognitive Assessment of Older People	DHS Quality Improvement Seminar 20 & 21 Feb 2008 “ACFI Opportunity For Excellence” Presentation by Dr Simon Crowe
Dementia Outcomes Measures (DOMS)- Cognition Assessment Measures	<a href="http://www.dementia-assessment.com.au/cognitive/index.html">http://www.dementia-assessment.com.au/cognitive/index.html</a>
Diagnostic and Statistical Manual of Mental Disorders	American Psychiatric Association: Diagnostic and Statistical Manual of Mental Disorders, Fifth edition. Arlington, VA, American Psychiatric Association, 2013

Document name	Reference
KICA-Cog – Kimberley Indigenous Cognitive Assessment.	Can be sourced from the DOMS website <a href="http://www.dementia-assessment.com.au/cognitive/KICA-Tool.pdf">http://www.dementia-assessment.com.au/cognitive/KICA-Tool.pdf</a>
Mayo Clinic	<a href="http://www.mayoclinic.org/diseases-conditions/">http://www.mayoclinic.org/diseases-conditions/</a>
NATFRAME Care profile	Section 11 of the National Framework for Documenting Care in Residential Aged Care Services. Australian Government resource <a href="https://www.dss.gov.au/our-responsibilities/ageing-and-aged-care/aged-care-funding/residential-care-subsidy/basic-subsidy-amount-aged-care-funding-instrument/suggested-assessment-tools-for-aged-care-funding-instrument-acfi">https://www.dss.gov.au/our-responsibilities/ageing-and-aged-care/aged-care-funding/residential-care-subsidy/basic-subsidy-amount-aged-care-funding-instrument/suggested-assessment-tools-for-aged-care-funding-instrument-acfi</a>
National Institute for Health and Care Excellence (NICE)	<a href="http://www.nice.org.uk/guidance/QS1/chapter/How-this-quality-standard-fits-into-the-NICE-Pathway">http://www.nice.org.uk/guidance/QS1/chapter/How-this-quality-standard-fits-into-the-NICE-Pathway</a>
PAS User's Guide and materials	PAS-CIS is one of six interviews found in the Psychogeriatric Assessment Scales, this can be sourced from the DOMS website <a href="http://www.dementia-assessment.com.au/cognitive/index.html">http://www.dementia-assessment.com.au/cognitive/index.html</a> <a href="http://www.dementia-assessment.com.au/cognitive/pasGuide.pdf">http://www.dementia-assessment.com.au/cognitive/pasGuide.pdf</a>
PAS-CIS	Part of the ACFI Assessment Pack which includes guidelines, sourced from the DSS website. <a href="https://www.dss.gov.au/our-responsibilities/ageing-and-aged-care/aged-care-funding/residential-care-subsidy/basic-subsidy-amount-aged-care-funding-instrument/psychogeriatric-assessment-scales-pas-user-guide">https://www.dss.gov.au/our-responsibilities/ageing-and-aged-care/aged-care-funding/residential-care-subsidy/basic-subsidy-amount-aged-care-funding-instrument/psychogeriatric-assessment-scales-pas-user-guide</a>
PAS-CIS Assessment Demo	Sourced from the DOMS website <a href="http://www.youtube.com/watch?v=wkkRwEjS8">http://www.youtube.com/watch?v=wkkRwEjS8</a>
RUDAS – Rowland Universal Dementia Assessment Scale.	Can be sourced from the DOMS website <a href="http://www.dementia-assessment.com.au/cognitive/index.html">http://www.dementia-assessment.com.au/cognitive/index.html</a> <a href="http://www.dementia-assessment.com.au/cognitive/RUDAS_scale.pdf">http://www.dementia-assessment.com.au/cognitive/RUDAS_scale.pdf</a>
Standardised Care Processes (SCP) Delirium	Published by the Ageing and Aged Care Branch, Victorian Government, Department of Health, Melbourne, Victoria (2012). Authors: La Trobe University ACEBAC Sourced @ <a href="http://www.health.vic.gov.au/agedcare/downloads/score/delirium_scp.pdf">http://www.health.vic.gov.au/agedcare/downloads/score/delirium_scp.pdf</a>