

Evidence-Based Clinical Assessment Toolkit

Quick Guide for Medications



www.aacs.com.au

COPYRIGHT

© 2016 Applied Aged Care Solutions Pty Ltd ABN 46 083 264 359

All rights reserved. Applied Aged Care Solutions Pty Ltd (**AACS**):

- ❖ invests significant time and resources in creating its original products;
- ❖ protects its copyright material;
- ❖ will enforce its rights in copyright material;
- ❖ reserves its legal rights to claim its loss and damage or an account of profits made resulting from infringements of its copyright.

Except as otherwise set out, AACS owns all copyright in this pack (“product”). AACS grants **Barwon Health** and the **Department of Health Victoria** a non-exclusive, perpetual, irrevocable, non-transferable, worldwide and royalty free licence to use the materials. Except as permitted by the Copyright Act 1968 (Cth) or unless you have obtained the specific written permission of AACS, Barwon Health, or the Department of Health Victoria, **you must not**, whether by electronic, mechanical or graphical means, or by hand or by any other means:

- reproduce or copy this product in whole or in part;
- modify or adapt this product;
- use this product for training purpose without licence;
- publish this product in whole or in part;
- cause this product in whole or in part to be transmitted;
- store this product in whole or in part in a retrieval system including a computer;
- record this product in whole or in part either electronically or mechanically; or
- resell this product in whole or in part.

DISCLAIMER

Applied Aged Care Solutions Pty Ltd (**AACS**) and its authors are not responsible for the results of any action taken on the basis of any information in this publication or for any error in or omission from this publication. This publication contains information of a general nature that may not be suitable to your own circumstances. It is your responsibility to satisfy yourself as to its suitability for your circumstances.

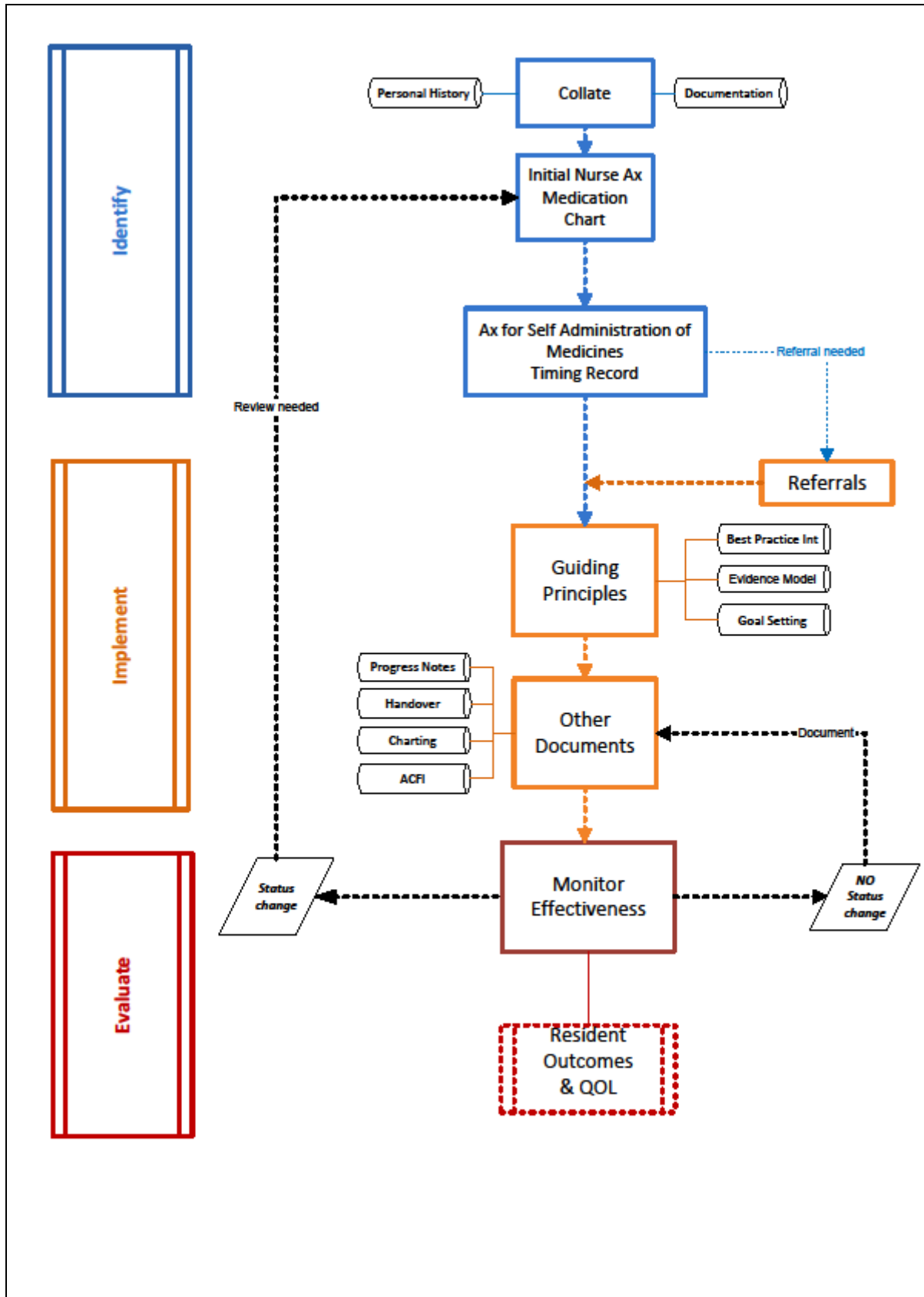
The publication has been compiled from information provided by third parties and other sources. There may be technical inaccuracies, typographical errors or unsuitable material for you. If you have any concerns about such third party content, you should refer to those sources for more specialist information and advice. Attribution to such sources appears in the text of this publication.

To the fullest extent permitted by law, AACS and its authors will be under no liability to any person in respect of any loss or damage (including consequential loss or damage) which may be suffered or incurred or which may arise directly or indirectly from or in connection with any use of this publication or the information contained in it.

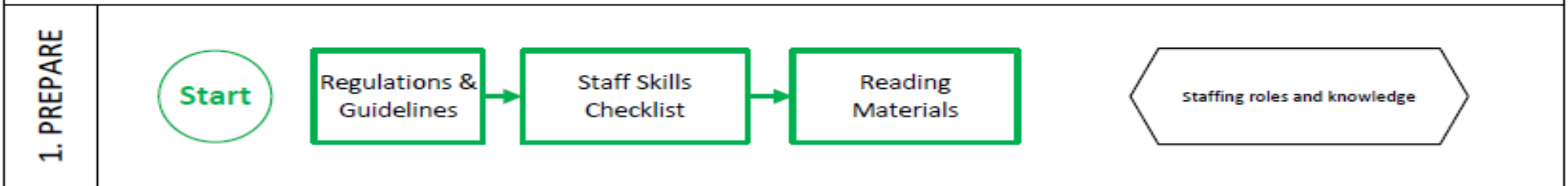
To the fullest extent permitted by law, all express or implied warranties are hereby excluded. Warranties or guarantees implied by statute which cannot be excluded will apply, however the liability of AACS and its authors for a breach of such implied terms will be limited, at the option of AACS, to any one or more of the following:

- replacement of the product supplied or supply of an equivalent product;
- payment of the cost of replacing the product or of acquiring an equivalent product;
- payment of the cost of having the product rectified;
- and in no circumstances extends to consequential, indirect or special loss or damage.

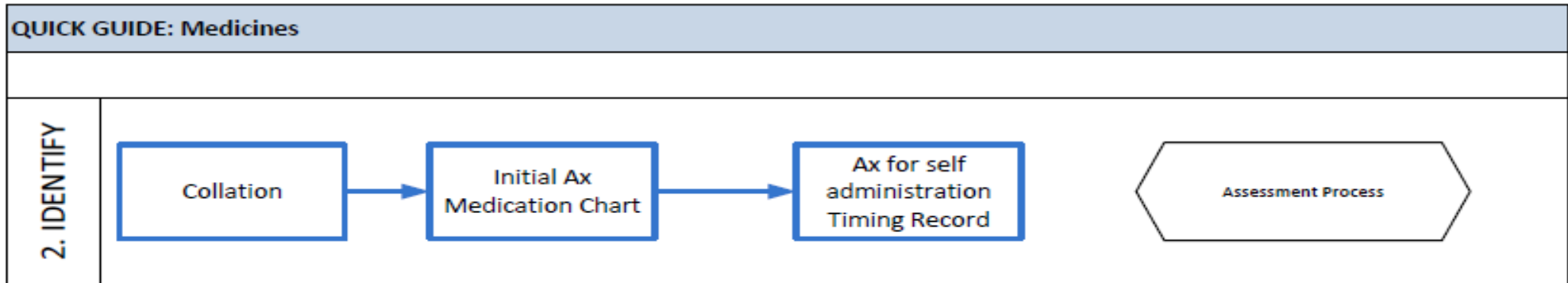
Medications Summary: Steps and Information Flow



QUICK GUIDE: Medicines

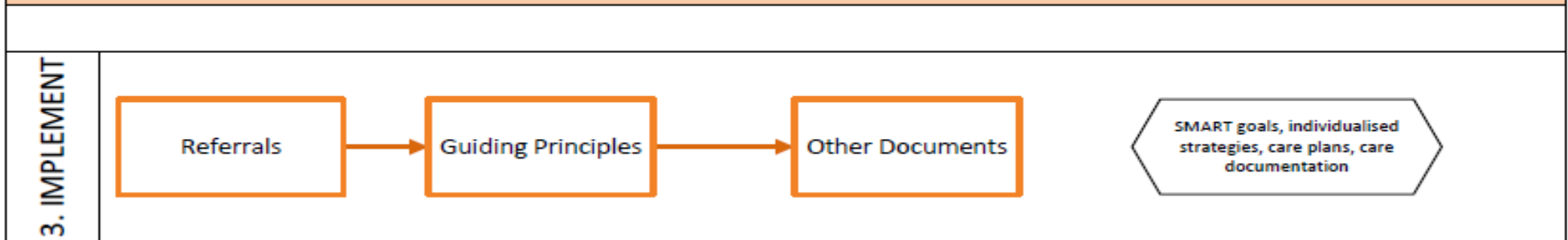


Step	Action	Outcomes
Staff Skills & Competencies Checklist	<input type="checkbox"/> Determine the skills or competencies required to complete each activity	Due diligence is applied to the process by the Nursing Management group
	<input type="checkbox"/> Identify staff or staff type competent to complete each activity	Management have identified the staff that fit the required skill set to complete activities within the process. It assists to select staff and determine the roles of staff to ensure the process can be completed, and assists to identify training and education needs
Reading Material	<input type="checkbox"/> Recommend the facility has a copy of the Department of Health and Ageing (2012), Guiding principles for medication management in residential aged care facilities. Staff to be aware of the 17 principles and how they are implemented. <input type="checkbox"/> Reading materials or summaries from the recommended resources are provided for each topic.	Introduces basic information that staff need to understand about the topic.



Step	Action	Outcomes
Collation	<input type="checkbox"/> Gathering the history from the resident and family	Preferences (related to the care, social and environmental aspects), medicines taken, allergies and risks, has the resident requested self administration of medicines. Involving the resident and family in their care underpins the principles of Person Centred Care.
	<input type="checkbox"/> Gathering diagnoses, clinical information, personal history from file notes (ACCR, CMA, AHP)	Diagnoses and information associated to medication management. Information about other domains that may interact e.g. sensory impairment, physical functioning, swallowing, etc
Screening/ Initial Assessment	<input type="checkbox"/> CHA <input type="checkbox"/> Medication Chart	CHA informs on both medication and impacts from other domains. CHA covers: allergies, drug intolerances, current medications. The eating and swallowing sections are particularly relevant to medication management. Medication chart records current medication, administration of medicines, alerts, reviews, health professional contact details.
Comprehensive Assessment	<input type="checkbox"/> Self-Administration of Medication assessment.	Interviewer administered, to determine capability to self administer medications.
	<input type="checkbox"/> Medication Timing Record	Documents the time taken providing medication assistance over 24 hours of regular and authorised daily medication.
	<input type="checkbox"/> Clinical Risk Management	System level monitoring for risk of Polypharmacy.
	<input type="checkbox"/> Clinical Reasoning	Includes the awareness of the impact of other impairments e.g. sensory, physical, medications

QUICK GUIDE: Medicines



Step	Action	Outcomes
Referrals	<input type="checkbox"/> Management to complete Referral Tables	Completed Referral Tables based on a due diligence approach (see below)
	<input type="checkbox"/> Referral Process	Provide a protocol and process that provides a documentation trail for the referral process, is there -a referral request template; - an information pack prepared for the Health Professional you refer out to; - an outcomes template for the Health Professional to report the outcomes to you; - a current list of Health Professionals (and their expertise) to refer out to.
	<input type="checkbox"/> List of Health Professionals that are referred to	Medication Advisory Committee regarding guideline implementation Pharmacist; General Practitioner for medication reviews Specialist Mental Health Assessment e.g., psycho-geriatrician Specialist Aged Health Assessment e.g., Geriatrician Speech Pathologist for comprehensive swallowing assessment Physiotherapist to help improve physical functioning e.g., dexterity to take medications
Interventions	<input type="checkbox"/> National Guidelines	To follow a quality use of medication approach
	<input type="checkbox"/> Self- Administration strategies	To assist the individual to self administer medicines
	<input type="checkbox"/> Family education	To improve knowledge and informed selection of medicines, co-operation with the management process
	<input type="checkbox"/> Staff	Management to develop policies and procedures to support safe practices. Staff to be appropriately qualified and authorised to administer medicines.

Step	Action	Outcomes
Goal Setting	<input type="checkbox"/> Specific	State exactly what it to be accomplished (Who, What, Where, Why)
	<input type="checkbox"/> Measurable	How will you demonstrate if the goals were met?
	<input type="checkbox"/> Action-oriented	What is the action to be completed?
	<input type="checkbox"/> Realistic / Relevant	Ensure the changes are feasible and affordable
	<input type="checkbox"/> Time-based	Date or elapsed time to complete the goal
	<input type="checkbox"/> Consumer focus	Consumer has participated in the process, and have listened to the resident view on their Quality of Life (enjoyment of life)
Care Planning	<input type="checkbox"/> Documentation	Recording care needs, strategies, goals and the evaluation of the goals and the care. Consumer participation in the process and feedback is to be sought.
	<input type="checkbox"/> Communication	Provides information about care needs in an accessible format. Congruent with other documentation.
	<input type="checkbox"/> Consumer focus	Consumer has participated in the process. Involving the resident and family in their care underpins the principles of Person Centred Care (PCC).
Linking the Evidence	<input type="checkbox"/> Diagnosis and symptoms	Accurate medication chart, understanding of impact form other domains.
	<input type="checkbox"/> Impact on body structure/function	Link a diagnosis to a body structure/function e.g. swallowing impairment
	<input type="checkbox"/> Activity	Link the body structure/function impact to the activity that is impacted or requested e.g. self administration of medicines
	<input type="checkbox"/> Strategies (actions) to improve enjoyment of life and participation	Document how the interventions address the activity
Other documents	<input type="checkbox"/> Progress Notes	Document new observations, assessments, strategies, and changes made to the care plan. Care plan, progress notes and assessments to be congruent with each other. Provide clear and consistent communication to staff and other Health Professionals.
	<input type="checkbox"/> Handover Notes	Use Handover notes to update Progress Notes and Care Plan
	<input type="checkbox"/> Charting	Update Charting information
	<input type="checkbox"/> Complete the ACFI	Use the assessment outcomes and the evidence links to determine and support the ACFI claims.

QUICK GUIDE: Medicines



Step	Action	Outcomes
Quality of Life Outcomes	<input type="checkbox"/> Repeat Quality of Life questionnaire (if suitable)	Objectively evaluate Quality of Life goals as relevant to the topic Involving the resident in their care underpins the principles of Person Centred Care (PCC).
	<input type="checkbox"/> Seek feedback from the resident and/or family	Involving the resident and family/friend in their care underpins the principles of Person Centred Care (PCC).
	<input type="checkbox"/> Seek staff feedback	Identify any incongruence between staff and consumer views; this may identify education opportunities for staff and/or family.

Resident Care Outcomes	<input type="checkbox"/> Evaluate Care Goals	Objectively evaluate care goals as relevant to the topic.
	<input type="checkbox"/> Monitor Incident Forms	Update risk assessments and strategies
	<input type="checkbox"/> Monitor Standardised Care Processes	Monitor system level clinical issues
	<input type="checkbox"/> Monitor Resident File documents	Ensuring the Resident File documentation is current and congruent. Ensuring the communication to care staff and other Health Professionals is congruent. This would include all Progress Notes (by nursing/ AHP/Medical Practitioners etc), new assessments and Care Plans